

**Product Name: TATA Box Binding Protein Rabbit
Monoclonal Antibody
Catalog #: AMRe03223**

Summary

Production Name	TATA Box Binding Protein Rabbit Monoclonal Antibody
Description	Recombinant Rabbit Monoclonal antibody
Host	Rabbit
Application	WB,IHC-F,IHC-P,ICC/IF,IP
Reactivity	Human,Mouse

Performance

Conjugation	Unconjugated
Modification	Unmodified
Isotype	IgG
Clonality	Monoclonal Antibody
Form	Liquid
Storage	Store at 4°C short term. Aliquot and store at -20°C long term. Avoid freeze/thaw cycles.
Buffer	50mM Tris-Glycine(pH 7.4), 0.15M NaCl, 40% Glycerol, 0.01% Sodium azide and 0.05% BSA
Purification	Affinity Purified

Immunogen

Gene Name	TBP
Alternative Names	TBP; GTF2D1; TF2D; TFIID; TATA-box-binding protein; TATA sequence-binding protein; TATA-binding factor; TATA-box factor; Transcription initiation factor TFIID TBP subunit
Gene ID	6908
SwissProt ID	P20226

Application

Dilution Ratio	WB: 1/500-1/1000 IHC: 1/50-1/100 IF: 1/50-1/200 IP: 1/20
Molecular Weight	Calculated MW: 38 kDa; Observed MW: 38 kDa

**Product Name: TATA Box Binding Protein Rabbit
Monoclonal Antibody
Catalog #: AMRe03223**

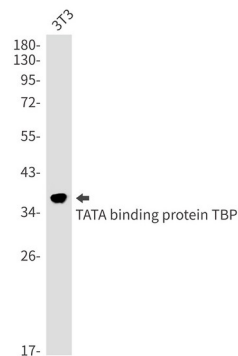
Background

As one of the few proteins in the preinitiation complex that binds DNA in a sequence-specific manner, it helps position RNA polymerase II over the transcription start site of the gene. However, it is estimated that only 10-20% of human promoters have TATA boxes. Therefore, TBP is probably not the only protein involved in positioning RNA polymerase II. This protein is not suitable for samples where the nuclear envelope has been removed.

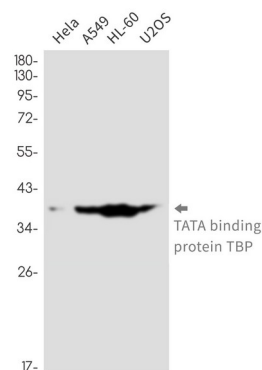
Research Area

Epigenetics and Nuclear Signaling

Image Data

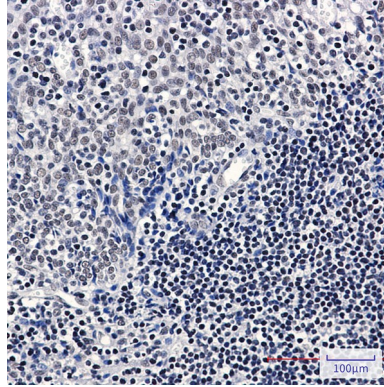


Western blot analysis of TATA binding protein TBP in 3T3 lysates using TATA Box Binding Protein antibody.

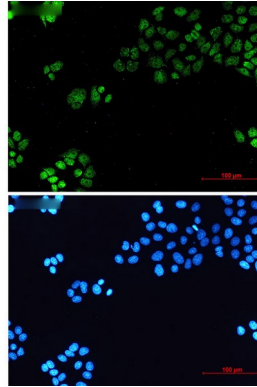


Western blot analysis of TATA binding protein TBP in HeLa, A549, HL-60, U2OS lysates using TATA binding protein TBP antibody.

**Product Name: TATA Box Binding Protein Rabbit
Monoclonal Antibody
Catalog #: AMRe03223**



Immunohistochemistry analysis of paraffin-embedded Human tonsil using TATA binding protein TBP antibody. High-pressure and temperature Sodium Citrate pH 6.0 was used for antigen retrieval.



Immunocytochemistry analysis of TATA binding protein TBP (green) in HeLa using TATA binding protein TBP antibody, and DAPI (blue).

Note

For research use only.