

Product Name: SV40 T Antigen Rabbit Monoclonal Antibody
Catalog #: AMRe03219



Summary

Production Name	SV40 T Antigen Rabbit Monoclonal Antibody
Description	Recombinant Rabbit Monoclonal antibody
Host	Rabbit
Application	WB,ICC/IF,IP
Reactivity	All

Performance

Conjugation	Unconjugated
Modification	Unmodified
Isotype	IgG
Clonality	Monoclonal Antibody
Form	Liquid
Storage	Store at 4°C short term. Aliquot and store at -20°C long term. Avoid freeze/thaw cycles.
Buffer	50mM Tris-Glycine(pH 7.4), 0.15M NaCl, 40% Glycerol, 0.01% Sodium azide and 0.05% BSA
Purification	Affinity Purified

Immunogen

Gene Name	-
Alternative Names	Large T antigen; LT; LT-AG
Gene ID	29031019.0
SwissProt ID	P03070

Application

Dilution Ratio	WB: 1/500-1/1000 IF: 1/50-1/200 IP: 1/20
Molecular Weight	Calculated MW: 82 kDa; Observed MW: 90 kDa

Product Name: SV40 T Antigen Rabbit Monoclonal Antibody
Catalog #: AMRe03219

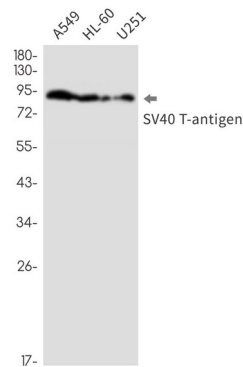
Background

Isoform large T antigen is a key early protein essential for both driving viral replication and inducing cellular transformation. Plays a role in viral genome replication by driving entry of quiescent cells into the cell cycle and by autoregulating the synthesis of viral early mRNA. Displays highly oncogenic activities by corrupting the host cellular checkpoint mechanisms that guard cell division and the transcription, replication, and repair of DNA.

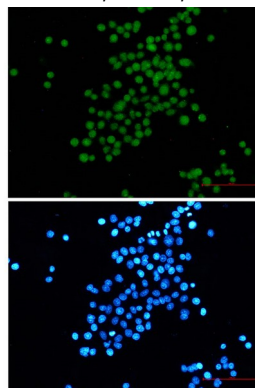
Research Area

Infectious Diseases

Image Data



Western blot analysis of SV40 T antigen in A549, HL-60, U251 lysates using SV40 T Antigen antibody.



Immunocytochemistry analysis of SV40 T antigen (green) in HeLa cells using SV40 T antigen antibody, and DAPI (blue)

Note

For research use only.