

**Product Name: Polycomb Protein SUZ12 Rabbit
Monoclonal Antibody
Catalog #: AMRe03218**

Summary

Production Name	Polycomb Protein SUZ12 Rabbit Monoclonal Antibody
Description	Recombinant Rabbit Monoclonal antibody
Host	Rabbit
Application	WB,IP
Reactivity	Human,Mouse

Performance

Conjugation	Unconjugated
Modification	Unmodified
Isotype	IgG
Clonality	Monoclonal Antibody
Form	Liquid
Storage	Store at 4°C short term. Aliquot and store at -20°C long term. Avoid freeze/thaw cycles.
Buffer	50mM Tris-Glycine(pH 7.4), 0.15M NaCl, 40% Glycerol, 0.01% Sodium azide and 0.05% BSA
Purification	Affinity Purified

Immunogen

Gene Name	SUZ12
Alternative Names	SUZ12; CHET9; JAZ1; KIAA0160; Polycomb protein SUZ12; Chromatin precipitated E2F target 9 protein; ChET 9 protein; Joined to JAZF1 protein; Suppressor of zeste 12 protein homolog
Gene ID	23512
SwissProt ID	Q15022

Application

Dilution Ratio	WB: 1/500-1/1000 IP: 1/20
Molecular Weight	Calculated MW: 83 kDa; Observed MW: 83 kDa

**Product Name: Polycomb Protein SUZ12 Rabbit
Monoclonal Antibody
Catalog #: AMRe03218**

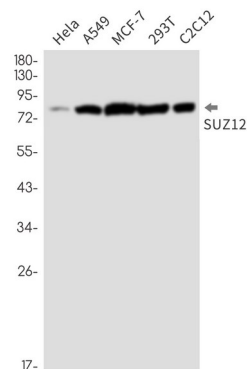
Background

Polycomb group (PcG) protein. Component of the PRC2/EED-EZH2 complex, which methylates 'Lys-9' (H3K9me) and 'Lys-27' (H3K27me) of histone H3, leading to transcriptional repression of the affected target gene. The PRC2/EED-EZH2 complex may also serve as a recruiting platform for DNA methyltransferases, thereby linking two epigenetic repression systems.

Research Area

Epigenetics and Nuclear Signaling

Image Data



Western blot analysis of SUZ12 in HeLa, A549, MCF-7, 293T, C2C12 lysates using Polycomb Protein SUZ12 antibody.

Note

For research use only.