

**Product Name: Superoxide Dismutase 1 Rabbit
Monoclonal Antibody
Catalog #: AMRe03216**

Summary

Production Name	Superoxide Dismutase 1 Rabbit Monoclonal Antibody
Description	Recombinant Rabbit Monoclonal antibody
Host	Rabbit
Application	WB,IHC-F,IHC-P,ICC/IF
Reactivity	Human,Rat

Performance

Conjugation	Unconjugated
Modification	Unmodified
Isotype	IgG
Clonality	Monoclonal Antibody
Form	Liquid
Storage	Store at 4°C short term. Aliquot and store at -20°C long term. Avoid freeze/thaw cycles.
Buffer	50mM Tris-Glycine(pH 7.4), 0.15M NaCl, 40% Glycerol, 0.01% Sodium azide and 0.05% BSA
Purification	Affinity Purified

Immunogen

Gene Name	SOD1
Alternative Names	SOD1; Superoxide dismutase [Cu-Zn]; Superoxide dismutase 1; hSod1
Gene ID	6647
SwissProt ID	P00441

Application

Dilution Ratio	WB: 1/500-1/1000 IHC: 1/50-1/100 IF: 1/50-1/200
Molecular Weight	Calculated MW: 16 kDa; Observed MW: 16 kDa

**Product Name: Superoxide Dismutase 1 Rabbit
Monoclonal Antibody
Catalog #: AMRe03216**

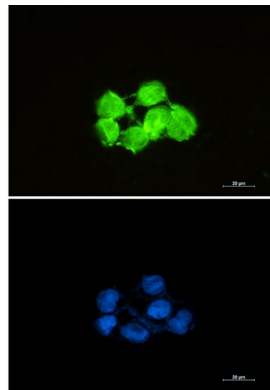
Background

SOD1, Cu/Zn superoxide dismutase, is a major antioxidant enzyme that catalyzes the conversion of superoxide anion to hydrogen peroxide and molecular oxygen. The mechanism by which mutant SOD1 induces the neurodegeneration observed in ALS is still unclear. Mutant SOD1 proteins become misfolded and consequently oligomerize into high molecular weight species that aggregate and end up in proteinaceous inclusions.

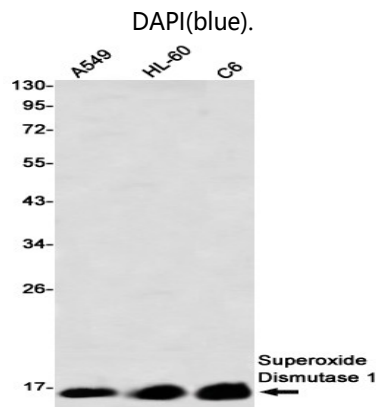
Research Area

Signal Transduction

Image Data

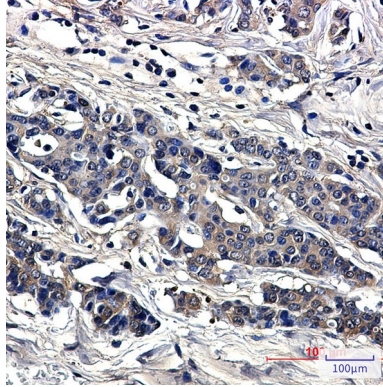


Immunocytochemistry analysis of Superoxide Dismutase 1 (green) in HCT116 using Superoxide Dismutase 1 antibody, and DAPI (blue).



Western blot analysis of Superoxide Dismutase 1 in A549, HL-60, C6 lysates using Superoxide Dismutase 1 antibody.

**Product Name: Superoxide Dismutase 1 Rabbit
Monoclonal Antibody
Catalog #: AMRe03216**



Immunohistochemistry analysis of paraffin-embedded Human breast cancer tissue using Superoxide Dismutase 1 antibody. High-pressure and temperature Sodium Citrate pH 6.0 was used for antigen retrieval.

Note

For research use only.