

---

## Summary

<b>Production Name</b>	SPT5 Rabbit Monoclonal Antibody
<b>Description</b>	Recombinant Rabbit Monoclonal antibody
<b>Host</b>	Rabbit
<b>Application</b>	WB,IHC-F,IHC-P,ICC/IF
<b>Reactivity</b>	Human

## Performance

<b>Conjugation</b>	Unconjugated
<b>Modification</b>	Unmodified
<b>Isotype</b>	IgG
<b>Clonality</b>	Monoclonal Antibody
<b>Form</b>	Liquid
<b>Storage</b>	Store at 4°C short term. Aliquot and store at -20°C long term. Avoid freeze/thaw cycles.
<b>Buffer</b>	50mM Tris-Glycine(pH 7.4), 0.15M NaCl, 40% Glycerol, 0.01% Sodium azide and 0.05% BSA
<b>Purification</b>	Affinity Purified

## Immunogen

<b>Gene Name</b>	SUPT5H
<b>Alternative Names</b>	hSPT5; SPT5; SPT5H; supt5h; Tat CT1
<b>Gene ID</b>	6829
<b>SwissProt ID</b>	O00267

## Application

<b>Dilution Ratio</b>	WB: 1/500-1/1000 IHC: 1/50-1/100 IF: 1/50-1/200
<b>Molecular Weight</b>	Calculated MW: 121 kDa; Observed MW: 150 kDa

## Background

---

**Product Name: SPT5 Rabbit Monoclonal Antibody**  
**Catalog #: AMRe03211**

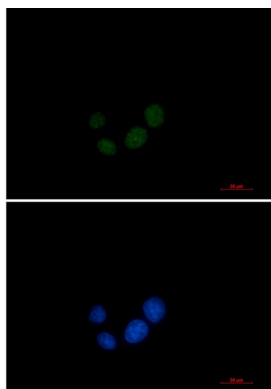


Component of the DRB sensitivity-inducing factor complex (DSIF complex), which regulates mRNA processing and transcription elongation by RNA polymerase II.

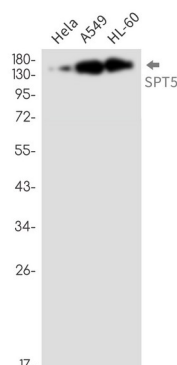
## Research Area

Epigenetics and Nuclear Signaling

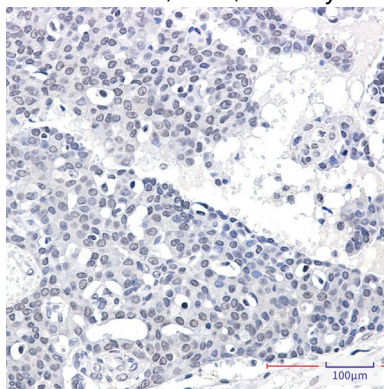
## Image Data



Immunocytochemistry analysis of SPT5 (green) in HeLa using SPT5 antibody, and DAPI (blue).



Western blot analysis of SPT5 in HeLa, A549, HL-60 lysates using SPT5 antibody.



Immunohistochemistry analysis of paraffin-embedded Human breast cancer tissue using SPT5 antibody. High-pressure and temperature Sodium Citrate pH 6.0 was used for antigen retrieval.

**Product Name: SPT5 Rabbit Monoclonal Antibody**  
**Catalog #: AMRe03211**

---



**Note**

For research use only.