
Summary

Production Name	SMARCD1 Rabbit Monoclonal Antibody
Description	Recombinant Rabbit Monoclonal antibody
Host	Rabbit
Application	WB,IP
Reactivity	Human

Performance

Conjugation	Unconjugated
Modification	Unmodified
Isotype	IgG
Clonality	Monoclonal Antibody
Form	Liquid
Storage	Store at 4°C short term. Aliquot and store at -20°C long term. Avoid freeze/thaw cycles.
Buffer	50mM Tris-Glycine(pH 7.4), 0.15M NaCl, 40% Glycerol, 0.01% Sodium azide and 0.05% BSA
Purification	Affinity Purified

Immunogen

Gene Name	SMARCD1
Alternative Names	CSS11; Rsc6p; BAF60A; CRACD1
Gene ID	6602
SwissProt ID	Q96GM5

Application

Dilution Ratio	WB: 1/500-1/1000 IP: 1/20
Molecular Weight	Calculated MW: 58 kDa; Observed MW: 58 kDa

Background

Product Name: SMARCD1 Rabbit Monoclonal Antibody
Catalog #: AMRe03207

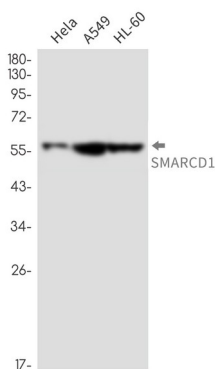


Involved in transcriptional activation and repression of select genes by chromatin remodeling (alteration of DNA-nucleosome topology).

Research Area

Epigenetics and Nuclear Signaling

Image Data



Western blot analysis of SMARCD1 in HeLa, A549, HL-60 lysates using SMARCD1 antibody.

Note

For research use only.