

**Product Name: S100 alpha6 Rabbit Monoclonal Antibody**  
**Catalog #: AMRe03193**

---

## Summary

<b>Production Name</b>	S100 alpha6 Rabbit Monoclonal Antibody
<b>Description</b>	Recombinant Rabbit Monoclonal antibody
<b>Host</b>	Rabbit
<b>Application</b>	WB,ICC/IF,IP
<b>Reactivity</b>	Human,Mouse

## Performance

<b>Conjugation</b>	Unconjugated
<b>Modification</b>	Unmodified
<b>Isotype</b>	IgG
<b>Clonality</b>	Monoclonal Antibody
<b>Form</b>	Liquid
<b>Storage</b>	Store at 4°C short term. Aliquot and store at -20°C long term. Avoid freeze/thaw cycles.
<b>Buffer</b>	50mM Tris-Glycine(pH 7.4), 0.15M NaCl, 40% Glycerol, 0.01% Sodium azide and 0.05% BSA
<b>Purification</b>	Affinity Purified

## Immunogen

<b>Gene Name</b>	S100A6
<b>Alternative Names</b>	S100 alpha6; Protein S100-A6; Calcyclin; MLN 4; PRA; CACY; CABP; 5B10
<b>Gene ID</b>	6277
<b>SwissProt ID</b>	P06703

## Application

<b>Dilution Ratio</b>	WB: 1/500-1/1000 IF: 1/50-1/200 IP: 1/20
<b>Molecular Weight</b>	Calculated MW: 10 kDa; Observed MW: 10 kDa

**Product Name: S100 alpha6 Rabbit Monoclonal Antibody**  
**Catalog #: AMRe03193**

---

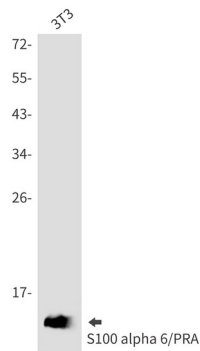
## Background

S100A6 (calcyclin) is involved in a number of cellular processes, including exocytosis and cell cycle regulation. In addition, S100A6 interacts with a number of proteins such as SIP, GAPDH, and annexins in a calcium-dependent fashion. Research studies demonstrate that a down regulation of corresponding S100A6 gene expression causes a decrease in cell proliferation.

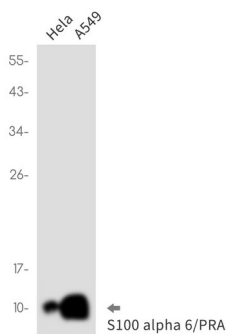
## Research Area

Cell Biology

## Image Data



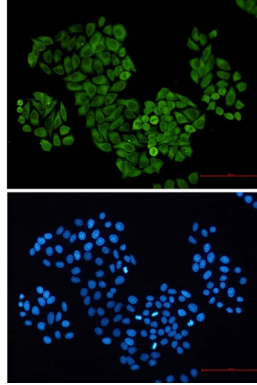
Western blot analysis of S100 alpha 6/PRA in 3T3 lysates using S100 alpha6 antibody.



Western blot analysis of S100 alpha 6/PRA in HeLa, A549 lysates using S100 alpha 6/PRA antibody.

**Product Name: S100 alpha6 Rabbit Monoclonal Antibody**  
**Catalog #: AMRe03193**

---



Immunocytochemistry analysis of S100 alpha 6/PRA (green) in hela using S100 alpha 6/PRA antibody, and DAPI(blue)

**Note**

For research use only.