
Summary

Production Name	RPS8 Rabbit Monoclonal Antibody
Description	Recombinant Rabbit Monoclonal antibody
Host	Rabbit
Application	WB,ICC/IF,IP
Reactivity	Human,Mouse,Rat,Hamster

Performance

Conjugation	Unconjugated
Modification	Unmodified
Isotype	IgG
Clonality	Monoclonal Antibody
Form	Liquid
Storage	Store at 4°C short term. Aliquot and store at -20°C long term. Avoid freeze/thaw cycles.
Buffer	50mM Tris-Glycine(pH 7.4), 0.15M NaCl, 40% Glycerol, 0.01% Sodium azide and 0.05% BSA
Purification	Affinity Purified

Immunogen

Gene Name	RPS8
Alternative Names	S8
Gene ID	6202
SwissProt ID	P62241

Application

Dilution Ratio	WB: 1/500-1/1000 IF: 1/50-1/200 IP: 1/20
Molecular Weight	Calculated MW: 24 kDa; Observed MW: 24 kDa

Background

Product Name: RPS8 Rabbit Monoclonal Antibody
Catalog #: AMRe03191

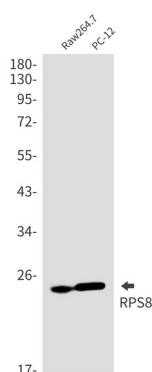


Ribosomes, the organelles that catalyze protein synthesis, consist of a small 40S subunit and a large 60S subunit. Together these subunits are composed of 4 RNA species and approximately 80 structurally distinct proteins. This gene encodes a ribosomal protein that is a component of the 40S subunit. The protein belongs to the S8E family of ribosomal proteins.

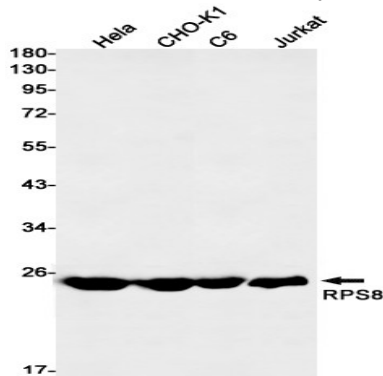
Research Area

-

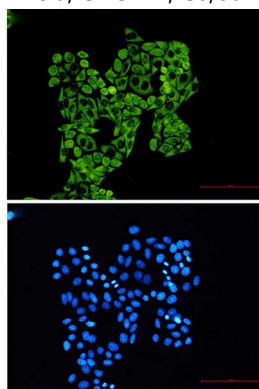
Image Data



Western blot analysis of RPS8 in Raw264.7, PC-12 lysates using RPS8 antibody.



Western blot analysis of RPS8 in HeLa, CHO-K1, C6, Jurkat lysates using RPS8 antibody.



Immunocytochemistry analysis of RPS8 (green) in HeLa using RPS8 antibody, and DAPI (blue)

Product Name: RPS8 Rabbit Monoclonal Antibody
Catalog #: AMRe03191



Note

For research use only.