

Summary

Production Name	RCC1 Rabbit Monoclonal Antibody
Description	Recombinant Rabbit Monoclonal antibody
Host	Rabbit
Application	WB,ICC/IF,IP
Reactivity	Human

Performance

Conjugation	Unconjugated
Modification	Unmodified
Isotype	IgG
Clonality	Monoclonal Antibody
Form	Liquid
Storage	Store at 4°C short term. Aliquot and store at -20°C long term. Avoid freeze/thaw cycles.
Buffer	50mM Tris-Glycine(pH 7.4), 0.15M NaCl, 40% Glycerol, 0.01% Sodium azide and 0.05% BSA
Purification	Affinity Purified

Immunogen

Gene Name	RCC1
Alternative Names	RCC1; RCC1-I; SNHG3-RCC1; CHC1
Gene ID	1104
SwissProt ID	P18754

Application

Dilution Ratio	WB: 1/500-1/1000 IF: 1/50-1/200 IP: 1/20
Molecular Weight	Calculated MW: 45 kDa; Observed MW: 45 kDa

Background

Product Name: RCC1 Rabbit Monoclonal Antibody
Catalog #: AMRe03184

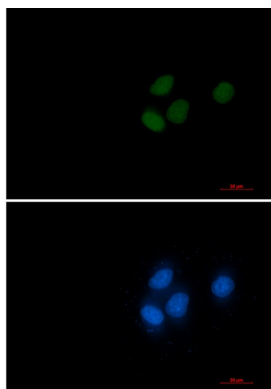


Guanine-nucleotide releasing factor that promotes the exchange of Ran-bound GDP by GTP. Involved in the regulation of onset of chromosome condensation in the S phase. Binds both to the nucleosomes and double-stranded DNA.

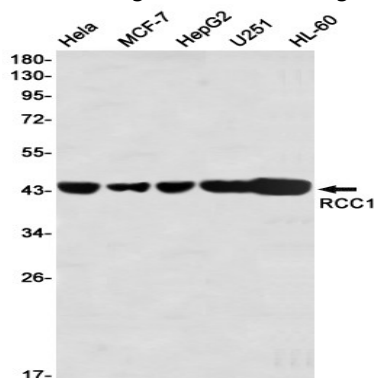
Research Area

-

Image Data



Immunocytochemistry analysis of RCC1 (green) in HeLa using RCC1 antibody, and DAPI (blue).



Western blot analysis of RCC1 in HeLa, MCF-7, HepG2, U251, HL-60 lysates using RCC1 antibody.

Note

For research use only.