

---

## Summary

<b>Production Name</b>	RBM3 Rabbit Monoclonal Antibody
<b>Description</b>	Recombinant Rabbit Monoclonal antibody
<b>Host</b>	Rabbit
<b>Application</b>	WB,ICC/IF
<b>Reactivity</b>	Human,Mouse

## Performance

<b>Conjugation</b>	Unconjugated
<b>Modification</b>	Unmodified
<b>Isotype</b>	IgG
<b>Clonality</b>	Monoclonal Antibody
<b>Form</b>	Liquid
<b>Storage</b>	Store at 4°C short term. Aliquot and store at -20°C long term. Avoid freeze/thaw cycles.
<b>Buffer</b>	50mM Tris-Glycine(pH 7.4), 0.15M NaCl, 40% Glycerol, 0.01% Sodium azide and 0.05% BSA
<b>Purification</b>	Affinity Purified

## Immunogen

<b>Gene Name</b>	RBM3
<b>Alternative Names</b>	RNPL; IS1-RNPL
<b>Gene ID</b>	5935
<b>SwissProt ID</b>	P98179

## Application

<b>Dilution Ratio</b>	WB: 1/500-1/1000 IF: 1/50-1/200
<b>Molecular Weight</b>	Calculated MW: 17 kDa; Observed MW: 17 kDa

## Background

---

**Product Name: RBM3 Rabbit Monoclonal Antibody**  
**Catalog #: AMRe03183**

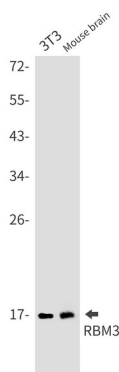


Cold-inducible mRNA binding protein that enhances global protein synthesis at both physiological and mild hypothermic temperatures.

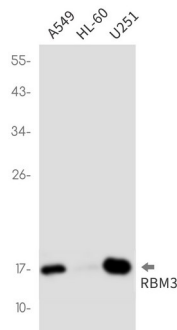
## Research Area

Epigenetics and Nuclear Signaling

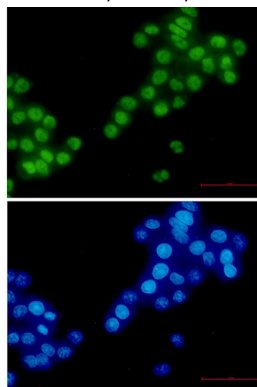
## Image Data



Western blot analysis of RBM3 in 3T3, mouse brain lysates using RBM3 antibody.



Western blot analysis of RBM3 in A549, HL-60, U251 lysates using RBM3 antibody.



Immunocytochemistry analysis of RBM3 (green) in HeLa using RBM3 antibody, and DAPI (blue)

**Product Name: RBM3 Rabbit Monoclonal Antibody**  
**Catalog #: AMRe03183**

---



**Note**

For research use only.