
Summary

Production Name	Caspase 7 Rabbit Monoclonal Antibody
Description	Recombinant Rabbit Monoclonal antibody
Host	Rabbit
Application	WB,IHC-P
Reactivity	Human

Performance

Conjugation	Unconjugated
Modification	Unmodified
Isotype	IgG
Clonality	Monoclonal Antibody
Form	Liquid
Storage	Store at 4°C short term. Aliquot and store at -20°C long term. Avoid freeze/thaw cycles.
Buffer	50mM Tris-Glycine(pH 7.4), 0.15M NaCl, 40% Glycerol, 0.01% Sodium azide and 0.05% BSA
Purification	Affinity Purified

Immunogen

Gene Name	CASP7
Alternative Names	MCH3; CMH-1; LICE2; CASP-7; ICE-LAP3
Gene ID	840
SwissProt ID	P55210

Application

Dilution Ratio	WB: 1/500-1/1000 IHC: 1/50-1/100
Molecular Weight	Calculated MW: 34 kDa; Observed MW: 34 kDa

Background

Product Name: Caspase 7 Rabbit Monoclonal Antibody
Catalog #: AMRe03163

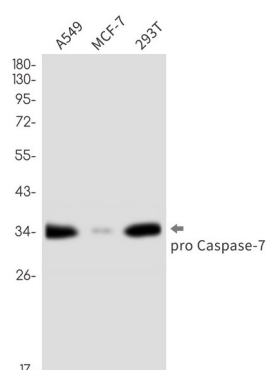


Belongs to the peptidase C14A family. Involved in the activation cascade of caspases responsible for apoptosis execution. Cleaves and activates sterol regulatory element binding proteins (SREBPs). Proteolytically cleaves poly(ADP-ribose) polymerase (PARP) at a '216-Asp--Gly-217' bond. Overexpression promotes programmed cell death.

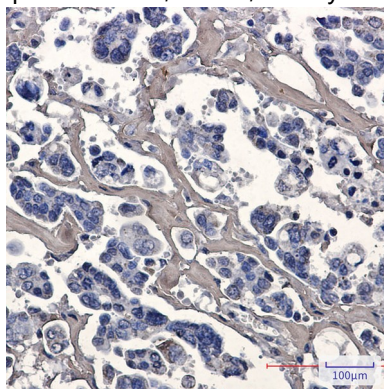
Research Area

Cell Biology

Image Data



Western blot analysis of Caspase7 in A549, MCF-7, 293T lysates using Caspase 7 antibody.



Immunohistochemistry analysis of paraffin-embedded Human Cholangiocarcinoma using pro Caspase7 antibody. High-pressure and temperature Sodium Citrate pH 6.0 was used for antigen retrieval.

Note

For research use only.