
Summary

Production Name	PPP2R5E Rabbit Monoclonal Antibody
Description	Recombinant Rabbit Monoclonal antibody
Host	Rabbit
Application	WB,ICC/IF
Reactivity	Human,Rat

Performance

Conjugation	Unconjugated
Modification	Unmodified
Isotype	IgG
Clonality	Monoclonal Antibody
Form	Liquid
Storage	Store at 4°C short term. Aliquot and store at -20°C long term. Avoid freeze/thaw cycles.
Buffer	50mM Tris-Glycine(pH 7.4), 0.15M NaCl, 40% Glycerol, 0.01% Sodium azide and 0.05% BSA
Purification	Affinity Purified

Immunogen

Gene Name	PPP2R5E
Alternative Names	B56E; B56epsilon
Gene ID	5529
SwissProt ID	Q16537

Application

Dilution Ratio	WB: 1/500-1/1000 IF: 1/50-1/200
Molecular Weight	Calculated MW: 55 kDa; Observed MW: 55 kDa

Background

Product Name: PPP2R5E Rabbit Monoclonal Antibody
Catalog #: AMRe03161

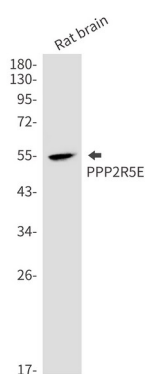


The B regulatory subunit might modulate substrate selectivity and catalytic activity, and also might direct the localization of the catalytic enzyme to a particular subcellular compartment.

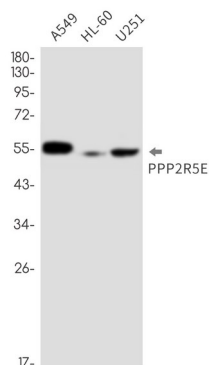
Research Area

Neuroscience

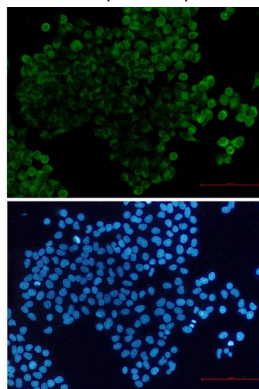
Image Data



Western blot analysis of PPP2R5E in rat brain lysates using PPP2R5E antibody.



Western blot analysis of PPP2R5E in A549, HL-60, U251 lysates using PPP2R5E antibody.



Immunocytochemistry analysis of PPP2R5E (green) in hela using PPP2R5E antibody, and DAPI (blue)

Product Name: PPP2R5E Rabbit Monoclonal Antibody
Catalog #: AMRe03161



Note

For research use only.