

## Summary

<b>Production Name</b>	POLG Rabbit Monoclonal Antibody
<b>Description</b>	Recombinant Rabbit Monoclonal antibody
<b>Host</b>	Rabbit
<b>Application</b>	WB
<b>Reactivity</b>	Human

## Performance

<b>Conjugation</b>	Unconjugated
<b>Modification</b>	Unmodified
<b>Isotype</b>	IgG
<b>Clonality</b>	Monoclonal Antibody
<b>Form</b>	Liquid
<b>Storage</b>	Store at 4°C short term. Aliquot and store at -20°C long term. Avoid freeze/thaw cycles.
<b>Buffer</b>	50mM Tris-Glycine(pH 7.4), 0.15M NaCl, 40% Glycerol, 0.01% Sodium azide and 0.05% BSA
<b>Purification</b>	Affinity Purified

## Immunogen

<b>Gene Name</b>	POLG
<b>Alternative Names</b>	MDP1; PEO; PolG alpha; POLG; POLG1; POLGA; SANDO; SCAE
<b>Gene ID</b>	5428
<b>SwissProt ID</b>	P54098

## Application

<b>Dilution Ratio</b>	WB: 1/500-1/1000
<b>Molecular Weight</b>	Calculated MW: 140 kDa; Observed MW: 140 kDa

## Background

**Product Name: POLG Rabbit Monoclonal Antibody**  
**Catalog #: AMRe03155**

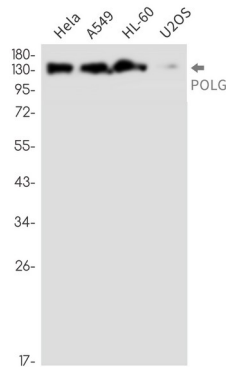


Involved in the replication of mitochondrial DNA.

## Research Area

-

## Image Data



Western blot analysis of POLG in HeLa, A549, HL-60, U2OS lysates using POLG antibody.

## Note

For research use only.