

**Product Name: Phospholipase C gamma 1 Rabbit
Monoclonal Antibody
Catalog #: AMRe03148**

Summary

Production Name	Phospholipase C gamma 1 Rabbit Monoclonal Antibody
Description	Recombinant Rabbit Monoclonal antibody
Host	Rabbit
Application	WB,ICC/IF,IP
Reactivity	Human,Rat

Performance

Conjugation	Unconjugated
Modification	Unmodified
Isotype	IgG
Clonality	Monoclonal Antibody
Form	Liquid
Storage	Store at 4°C short term. Aliquot and store at -20°C long term. Avoid freeze/thaw cycles.
Buffer	50mM Tris-Glycine(pH 7.4), 0.15M NaCl, 40% Glycerol, 0.01% Sodium azide and 0.05% BSA
Purification	Affinity Purified

Immunogen

Gene Name	PLCG1
Alternative Names	PLCG1; PLC1; 1-phosphatidylinositol 4; 5-bisphosphate phosphodiesterase gamma-1; PLC-148; Phosphoinositide phospholipase C-gamma-1; Phospholipase C-II; PLC-II; Phospholipase C-gamma-1; PLC-gamma-1
Gene ID	5335
SwissProt ID	P19174

Application

Dilution Ratio	WB: 1/500-1/1000 IF: 1/50-1/200 IP: 1/20
Molecular Weight	Calculated MW: 149 kDa; Observed MW: 149 kDa

**Product Name: Phospholipase C gamma 1 Rabbit
Monoclonal Antibody
Catalog #: AMRe03148**

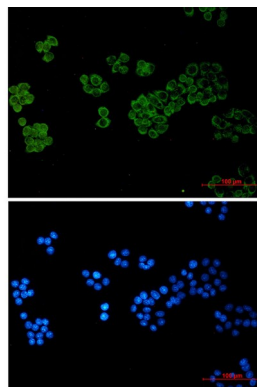
Background

The protein encoded by this gene catalyzes the formation of inositol 1,4,5-trisphosphate and diacylglycerol from phosphatidylinositol 4,5-bisphosphate. This reaction uses calcium as a cofactor and plays an important role in the intracellular transduction of receptor-mediated tyrosine kinase activators. For example, when activated by SRC, the encoded protein causes the Ras guanine nucleotide exchange factor RasGRP1 to translocate to the Golgi, where it activates Ras.

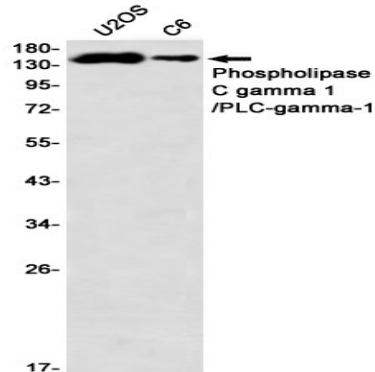
Research Area

Cardiovascular

Image Data



Immunocytochemistry analysis of Phospho-lipase C gamma 1 (green) in HeLa using Phospho-lipase C gamma 1 antibody, and DAPI (blue).



Western blot analysis of Phospho-lipase C gamma 1/PLCgamma1 in U2OS, C6 lysates using Phospho-lipase C gamma 1/PLCgamma1 antibody.

**Product Name: Phospholipase C gamma 1 Rabbit
Monoclonal Antibody
Catalog #: AMRe03148**



Note

For research use only.