

---

## Summary

<b>Production Name</b>	P2Y13 Rabbit Monoclonal Antibody
<b>Description</b>	Recombinant Rabbit Monoclonal antibody
<b>Host</b>	Rabbit
<b>Application</b>	WB
<b>Reactivity</b>	Human

## Performance

<b>Conjugation</b>	Unconjugated
<b>Modification</b>	Unmodified
<b>Isotype</b>	IgG
<b>Clonality</b>	Monoclonal Antibody
<b>Form</b>	Liquid
<b>Storage</b>	Store at 4°C short term. Aliquot and store at -20°C long term. Avoid freeze/thaw cycles.
<b>Buffer</b>	50mM Tris-Glycine(pH 7.4), 0.15M NaCl, 40% Glycerol, 0.01% Sodium azide and 0.05% BSA
<b>Purification</b>	Affinity Purified

## Immunogen

<b>Gene Name</b>	P2RY13
<b>Alternative Names</b>	GPCR1; GPR86; GPR94; P2Y13; SP174; FKSG77
<b>Gene ID</b>	53829
<b>SwissProt ID</b>	Q9BPV8

## Application

<b>Dilution Ratio</b>	WB: 1/500-1/1000
<b>Molecular Weight</b>	Calculated MW: 41 kDa; Observed MW: 41 kDa

## Background

---

**Product Name: P2Y13 Rabbit Monoclonal Antibody**  
**Catalog #: AMRe03134**

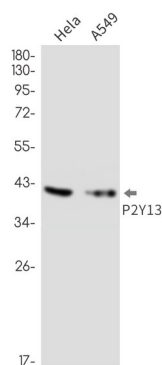


The product of this gene belongs to the family of G-protein coupled receptors. This family has several receptor subtypes with different pharmacological selectivity, which overlaps in some cases, for various adenosine and uridine nucleotides. This receptor is activated by ADP. [provided by RefSeq, Sep 2008]

## Research Area

Neuroscience

## Image Data



Western blot analysis of P2Y13 in HeLa, A549 lysates using P2Y13 antibody.

## Note

For research use only.