

Summary

Production Name	p23 Rabbit Monoclonal Antibody
Description	Recombinant Rabbit Monoclonal antibody
Host	Rabbit
Application	WB,ICC/IF,IP
Reactivity	Human,Mouse,Rat

Performance

Conjugation	Unconjugated
Modification	Unmodified
Isotype	IgG
Clonality	Monoclonal Antibody
Form	Liquid
Storage	Store at 4°C short term. Aliquot and store at -20°C long term. Avoid freeze/thaw cycles.
Buffer	50mM Tris-Glycine(pH 7.4), 0.15M NaCl, 40% Glycerol, 0.01% Sodium azide and 0.05% BSA
Purification	Affinity Purified

Immunogen

Gene Name	PTGES3 PTGES3; P23; TEBP; Prostaglandin E synthase 3; Cytosolic prostaglandin E2 synthase;
Alternative Names	cPGES; Hsp90 co-chaperone; Progesterone receptor complex p23; Telomerase-binding protein p23
Gene ID	10728
SwissProt ID	Q15185

Application

Dilution Ratio	WB: 1/500-1/1000 IF: 1/50-1/200 IP: 1/20
Molecular Weight	Calculated MW: 19 kDa; Observed MW: 23 kDa

Product Name: p23 Rabbit Monoclonal Antibody
Catalog #: AMRe03131



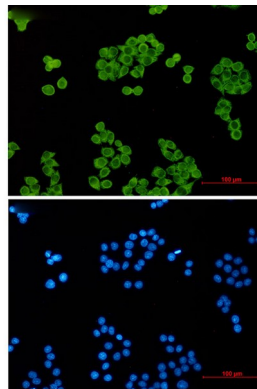
Background

Molecular chaperone that localizes to genomic response elements in a hormone-dependent manner and disrupts receptor-mediated transcriptional activation, by promoting disassembly of transcriptional regulatory complexes.

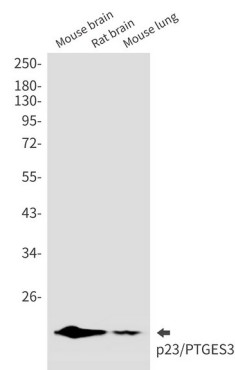
Research Area

Epigenetics and Nuclear Signaling

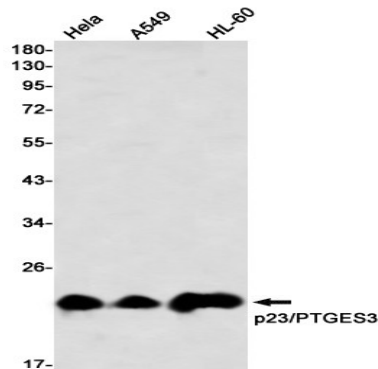
Image Data



Immunocytochemistry analysis of p23 (green) in HeLa using p23 antibody, and DAPI (blue).



Western blot analysis of p23/PTGES3 in mouse brain, rat brain, mouse lung lysates using p23/PTGES3 antibody.



Product Name: p23 Rabbit Monoclonal Antibody
Catalog #: AMRe03131



Western blot analysis of p23/PTGES3 in Hela, A549, HL-60 lysates using p23/PTGES3 antibody

Note

For research use only.