
Summary

Production Name	NEK6 Rabbit Monoclonal Antibody
Description	Recombinant Rabbit Monoclonal antibody
Host	Rabbit
Application	WB,IP
Reactivity	Human

Performance

Conjugation	Unconjugated
Modification	Unmodified
Isotype	IgG
Clonality	Monoclonal Antibody
Form	Liquid
Storage	Store at 4°C short term. Aliquot and store at -20°C long term. Avoid freeze/thaw cycles.
Buffer	50mM Tris-Glycine(pH 7.4), 0.15M NaCl, 40% Glycerol, 0.01% Sodium azide and 0.05% BSA
Purification	Affinity Purified

Immunogen

Gene Name	NEK6
Alternative Names	NEK6; NimA related protein kinase 6; SID61512
Gene ID	10783
SwissProt ID	Q9HC98

Application

Dilution Ratio	WB: 1/500-1/1000 IP: 1/20
Molecular Weight	Calculated MW: 36 kDa; Observed MW: 36 kDa

Background

Product Name: NEK6 Rabbit Monoclonal Antibody
Catalog #: AMRe03108

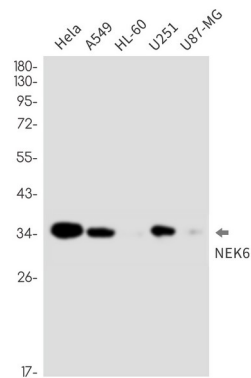


Activated during M phase. Required for chromosome segregation at metaphase-anaphase transition and therefore for mitotic progression. Inhibition of activity results in apoptosis. Phosphorylates KIF11 to promote mitotic spindle formation.

Research Area

Cell Biology

Image Data



Western blot analysis of NEK6 in HeLa, A549, HL-60, U251, U87-MG lysates using NEK6 antibody.

Note

For research use only.