
Summary

Production Name	NEK2 Rabbit Monoclonal Antibody
Description	Recombinant Rabbit Monoclonal antibody
Host	Rabbit
Application	WB
Reactivity	Human

Performance

Conjugation	Unconjugated
Modification	Unmodified
Isotype	IgG
Clonality	Monoclonal Antibody
Form	Liquid
Storage	Store at 4°C short term. Aliquot and store at -20°C long term. Avoid freeze/thaw cycles.
Buffer	50mM Tris-Glycine(pH 7.4), 0.15M NaCl, 40% Glycerol, 0.01% Sodium azide and 0.05% BSA
Purification	Affinity Purified

Immunogen

Gene Name	NEK2
Alternative Names	HsPK21; NEK2; NEK2A; NLK1
Gene ID	4751
SwissProt ID	P51955

Application

Dilution Ratio	WB: 1/500-1/1000
Molecular Weight	Calculated MW: 52 kDa; Observed MW: 52 kDa

Background

Product Name: NEK2 Rabbit Monoclonal Antibody
Catalog #: AMRe03107

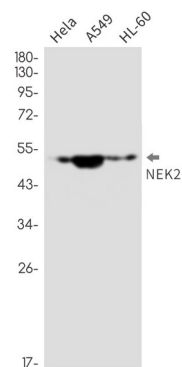


Protein kinase that is involved in mitotic regulation. Integral component of the mitotic spindle-assembly checkpoint which is necessary for proper chromosome segregation during metaphase-anaphase transition. Required for association of MAD2L1 to kinetochore.

Research Area

Cell Biology

Image Data



Western blot analysis of NEK2 in HeLa, A549, HL-60 lysates using NEK2 antibody.

Note

For research use only.