

Summary

Production Name	NDEL1 Rabbit Monoclonal Antibody
Description	Recombinant Rabbit Monoclonal antibody
Host	Rabbit
Application	WB
Reactivity	Human,Mouse

Performance

Conjugation	Unconjugated
Modification	Unmodified
Isotype	IgG
Clonality	Monoclonal Antibody
Form	Liquid
Storage	Store at 4°C short term. Aliquot and store at -20°C long term. Avoid freeze/thaw cycles.
Buffer	50mM Tris-Glycine(pH 7.4), 0.15M NaCl, 40% Glycerol, 0.01% Sodium azide and 0.05% BSA
Purification	Affinity Purified

Immunogen

Gene Name	NDEL1
Alternative Names	EOPA; MITAP1; NDEL1; NUDEL
Gene ID	81565
SwissProt ID	Q9GZM8

Application

Dilution Ratio	WB: 1/500-1/1000
Molecular Weight	Calculated MW: 38 kDa; Observed MW: 38 kDa

Background

Product Name: NDEL1 Rabbit Monoclonal Antibody
Catalog #: AMRe03102

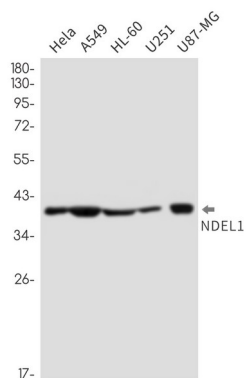


Required for organization of the cellular microtubule array and microtubule anchoring at the centrosome. May regulate microtubule organization at least in part by targeting the microtubule severing protein KATNA1 to the centrosome.

Research Area

Neuroscience

Image Data



Western blot analysis of NDEL1 in HeLa, A549, HL-60, U251, U87-MG lysates using NDEL1 antibody.

Note

For research use only.