

---

## Summary

<b>Production Name</b>	MLLT6 Rabbit Monoclonal Antibody
<b>Description</b>	Recombinant Rabbit Monoclonal antibody
<b>Host</b>	Rabbit
<b>Application</b>	WB
<b>Reactivity</b>	Human

## Performance

<b>Conjugation</b>	Unconjugated
<b>Modification</b>	Unmodified
<b>Isotype</b>	IgG
<b>Clonality</b>	Monoclonal Antibody
<b>Form</b>	Liquid
<b>Storage</b>	Store at 4°C short term. Aliquot and store at -20°C long term. Avoid freeze/thaw cycles.
<b>Buffer</b>	50mM Tris-Glycine(pH 7.4), 0.15M NaCl, 40% Glycerol, 0.01% Sodium azide and 0.05% BSA
<b>Purification</b>	Affinity Purified

## Immunogen

<b>Gene Name</b>	MLLT6
<b>Alternative Names</b>	AF17
<b>Gene ID</b>	4302
<b>SwissProt ID</b>	P55198

## Application

<b>Dilution Ratio</b>	WB: 1/500-1/1000
<b>Molecular Weight</b>	Calculated MW: 112 kDa; Observed MW: 112 kDa

## Background

---

**Product Name: MLLT6 Rabbit Monoclonal Antibody**  
**Catalog #: AMRe03090**

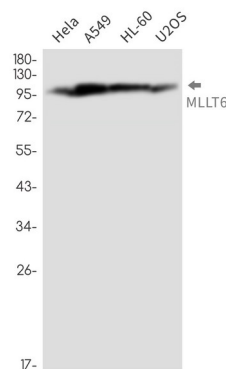


Enables histone binding activity and nucleosome binding activity. Predicted to be involved in positive regulation of transcription by RNA polymerase II. Predicted to act upstream of or within several processes, including negative regulation of histone H3-K79 methylation; renal potassium excretion; and renal sodium excretion. Predicted to be active in nucleus.

## Research Area

-

## Image Data



Western blot analysis of MLLT6 in HeLa, A549, HL-60, U2OS lysates using MLLT6 antibody.

## Note

For research use only.