
Summary

Production Name	ME2 Rabbit Monoclonal Antibody
Description	Recombinant Rabbit Monoclonal antibody
Host	Rabbit
Application	WB,ICC/IF
Reactivity	Human,Mouse,Rat

Performance

Conjugation	Unconjugated
Modification	Unmodified
Isotype	IgG
Clonality	Monoclonal Antibody
Form	Liquid
Storage	Store at 4°C short term. Aliquot and store at -20°C long term. Avoid freeze/thaw cycles.
Buffer	50mM Tris-Glycine(pH 7.4), 0.15M NaCl, 40% Glycerol, 0.01% Sodium azide and 0.05% BSA
Purification	Affinity Purified

Immunogen

Gene Name	ME2
Alternative Names	ODS1
Gene ID	4200
SwissProt ID	P23368

Application

Dilution Ratio	WB: 1/500-1/1000 IF: 1/50-1/200
Molecular Weight	Calculated MW: 65 kDa; Observed MW: 65 kDa

Background

Product Name: ME2 Rabbit Monoclonal Antibody
Catalog #: AMRe03080

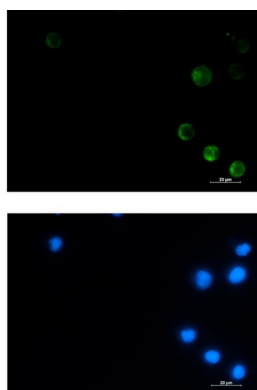


This gene encodes a mitochondrial NAD-dependent malic enzyme, a homotetrameric protein, that catalyzes the oxidative decarboxylation of malate to pyruvate. It had previously been weakly linked to a syndrome known as Friedreich ataxia that has since been shown to be the result of mutation in a completely different gene. Certain single-nucleotide polymorphism haplotypes of this gene have been shown to increase the risk for idiopathic generalized epilepsy. Alternatively spliced transcript variants encoding different isoforms found for this gene.

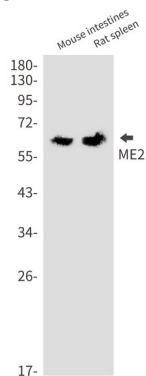
Research Area

Signal Transduction

Image Data

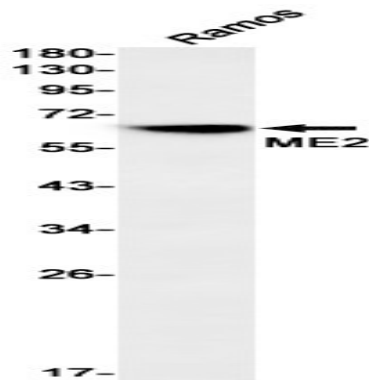


Immunocytochemistry analysis of ME2 (green) in Jurkat using ME2 antibody, and DAPI (blue).



Western blot analysis of ME2 in mouse intestines, rat spleen lysates using ME2 antibody.

Product Name: ME2 Rabbit Monoclonal Antibody
Catalog #: AMRe03080



Western blot analysis of ME2 in Ramos lysates using ME2 antibody

Note

For research use only.