

Summary

| | |
|------------------------|--|
| Production Name | LYRIC Rabbit Monoclonal Antibody |
| Description | Recombinant Rabbit Monoclonal antibody |
| Host | Rabbit |
| Application | WB,IHC-F,IHC-P,ICC/IF,IP |
| Reactivity | Human |

Performance

| | |
|---------------------|--|
| Conjugation | Unconjugated |
| Modification | Unmodified |
| Isotype | IgG |
| Clonality | Monoclonal Antibody |
| Form | Liquid |
| Storage | Store at 4°C short term. Aliquot and store at -20°C long term. Avoid freeze/thaw cycles. |
| Buffer | 50mM Tris-Glycine(pH 7.4), 0.15M NaCl, 40% Glycerol, 0.01% Sodium azide and 0.05% BSA |
| Purification | Affinity Purified |

Immunogen

| | |
|--------------------------|---|
| Gene Name | MTDH MTDH; AEG1; LYRIC; Protein LYRIC; 3D3/LYRIC; Astrocyte elevated gene-1 protein; |
| Alternative Names | AEG-1; Lysine-rich CEACAM1 co-isolated protein; Metadherin; Metastasis adhesion protein |
| Gene ID | 92140 |
| SwissProt ID | Q86UE4 |

Application

| | |
|-------------------------|--|
| Dilution Ratio | WB: 1/500-1/1000 IHC: 1/50-1/100 IF: 1/50-1/200 IP: 1/20 |
| Molecular Weight | Calculated MW: 64 kDa; Observed MW: 75 kDa |

Product Name: LYRIC Rabbit Monoclonal Antibody
Catalog #: AMRe03072



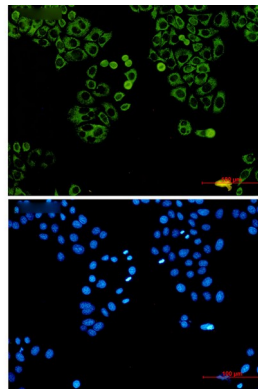
Background

Downregulates SLC1A2/EAAT2 promoter activity when expressed ectopically. Activates the nuclear factor kappa-B (NF-kappa-B) transcription factor. Promotes anchorage-independent growth of immortalized melanocytes and astrocytes which is a key component in tumor cell expansion.

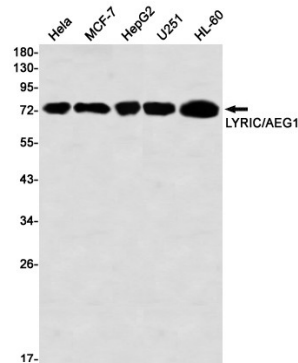
Research Area

Signal Transduction

Image Data

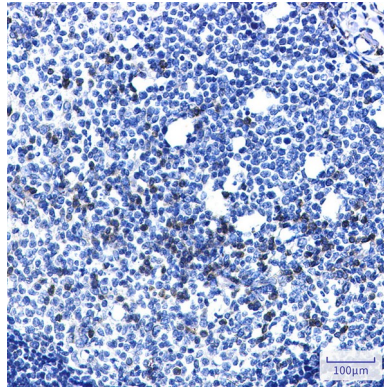


Immunocytochemistry analysis of LYRIC (green) in HeLa using LYRIC antibody, and DAPI (blue).



Western blot analysis of LYRIC/AEG1 in HeLa, MCF-7, HepG2, U251, HL-60 lysates using LYRIC/AEG1 antibody.

Product Name: LYRIC Rabbit Monoclonal Antibody
Catalog #: AMRe03072



Immunohistochemistry analysis of paraffin-embedded Human tonsil using LYRIC/AEG1 antibody. High-pressure and temperature Sodium Citrate pH 6.0 was used for antigen retrieval.

Note

For research use only.