

**Product Name: LINE 1 ORF1p Rabbit Monoclonal Antibody**  
**Catalog #: AMRe03067**

---

## Summary

<b>Production Name</b>	LINE 1 ORF1p Rabbit Monoclonal Antibody
<b>Description</b>	Recombinant Rabbit Monoclonal antibody
<b>Host</b>	Rabbit
<b>Application</b>	WB,IP
<b>Reactivity</b>	Human

## Performance

<b>Conjugation</b>	Unconjugated
<b>Modification</b>	Unmodified
<b>Isotype</b>	IgG
<b>Clonality</b>	Monoclonal Antibody
<b>Form</b>	Liquid
<b>Storage</b>	Store at 4°C short term. Aliquot and store at -20°C long term. Avoid freeze/thaw cycles.
<b>Buffer</b>	50mM Tris-Glycine(pH 7.4), 0.15M NaCl, 40% Glycerol, 0.01% Sodium azide and 0.05% BSA
<b>Purification</b>	Affinity Purified

## Immunogen

<b>Gene Name</b>	L1RE1
<b>Alternative Names</b>	L1ORF1p; L1RE1; LRE1
<b>Gene ID</b>	105370531.0
<b>SwissProt ID</b>	Q9UN81

## Application

<b>Dilution Ratio</b>	WB: 1/500-1/1000 IP: 1/20
<b>Molecular Weight</b>	Calculated MW: 40 kDa; Observed MW: 40 kDa

**Product Name: LINE 1 ORF1p Rabbit Monoclonal Antibody**  
**Catalog #: AMRe03067**

---

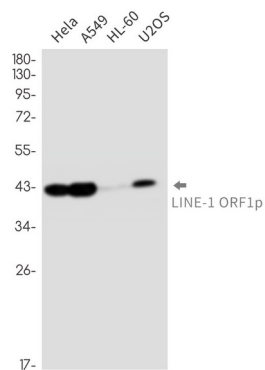
## Background

Nucleic acid-binding protein which is essential for retrotransposition of LINE-1 elements in the genome.

## Research Area

Epigenetics and Nuclear Signaling

## Image Data



Western blot analysis of LINE1 ORF1p in HeLa, A549, HL-60, U2OS lysates using LINE 1 ORF1p antibody.

## Note

For research use only.