

## Summary

<b>Production Name</b>	LILRB1 Rabbit Monoclonal Antibody
<b>Description</b>	Recombinant Rabbit Monoclonal antibody
<b>Host</b>	Rabbit
<b>Application</b>	WB,IP
<b>Reactivity</b>	Human

## Performance

<b>Conjugation</b>	Unconjugated
<b>Modification</b>	Unmodified
<b>Isotype</b>	IgG
<b>Clonality</b>	Monoclonal Antibody
<b>Form</b>	Liquid
<b>Storage</b>	Store at 4°C short term. Aliquot and store at -20°C long term. Avoid freeze/thaw cycles.
<b>Buffer</b>	50mM Tris-Glycine(pH 7.4), 0.15M NaCl, 40% Glycerol, 0.01% Sodium azide and 0.05% BSA
<b>Purification</b>	Affinity Purified

## Immunogen

<b>Gene Name</b>	LILRB1
<b>Alternative Names</b>	ILT2; LIR1; MIR7; PIRB; CD85J; ILT-2; LIR-1; MIR-7; PIR-B
<b>Gene ID</b>	10859
<b>SwissProt ID</b>	Q8NHL6

## Application

<b>Dilution Ratio</b>	WB: 1/500-1/1000 IP: 1/20
<b>Molecular Weight</b>	Calculated MW: 71 kDa; Observed MW: 110 kDa

## Background

**Product Name: LILRB1 Rabbit Monoclonal Antibody**  
**Catalog #: AMRe03066**

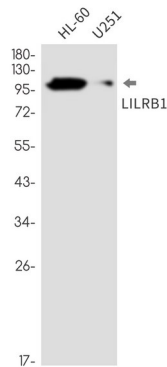


Receptor for class I MHC antigens.

## Research Area

Immunology

## Image Data



Western blot analysis of LILRB1 in HL-60, U251 lysates using LILRB1 antibody.

## Note

For research use only.