

Summary

Production Name	LIG1 Rabbit Monoclonal Antibody
Description	Recombinant Rabbit Monoclonal antibody
Host	Rabbit
Application	WB,IHC-F,IHC-P,ICC/IF
Reactivity	Human,Rat

Performance

Conjugation	Unconjugated
Modification	Unmodified
Isotype	IgG
Clonality	Monoclonal Antibody
Form	Liquid
Storage	Store at 4°C short term. Aliquot and store at -20°C long term. Avoid freeze/thaw cycles.
Buffer	50mM Tris-Glycine(pH 7.4), 0.15M NaCl, 40% Glycerol, 0.01% Sodium azide and 0.05% BSA
Purification	Affinity Purified

Immunogen

Gene Name	LIG1
Alternative Names	LIG1; DNA ligase 1; DNA ligase I; Polydeoxyribonucleotide synthase [ATP] 1
Gene ID	3978
SwissProt ID	P18858

Application

Dilution Ratio	WB: 1/500-1/1000 IHC: 1/50-1/100 IF: 1/50-1/200
Molecular Weight	Calculated MW: 102 kDa; Observed MW: 102 kDa

Background

Product Name: LIG1 Rabbit Monoclonal Antibody
Catalog #: AMRe03065

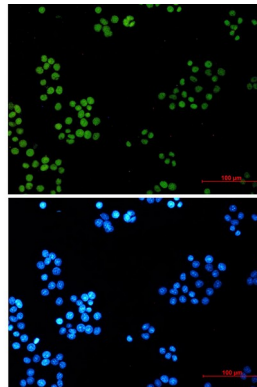


DNA ligase that seals nicks in double-stranded DNA during DNA replication, DNA recombination and DNA repair.

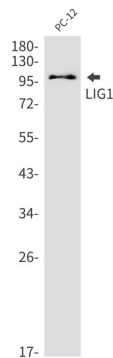
Research Area

Epigenetics and Nuclear Signaling

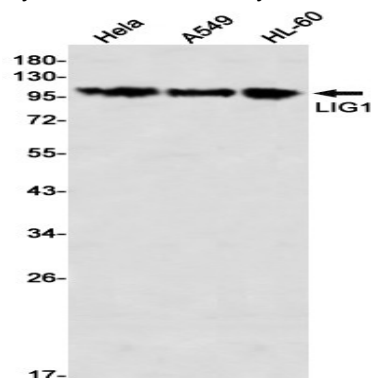
Image Data



Immunocytochemistry analysis of LIG1 (green) in HeLa using LIG1 antibody, and DAPI (blue).

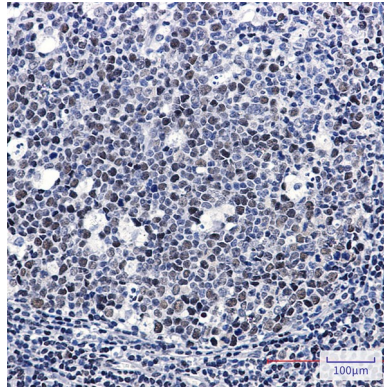


Western blot analysis of LIG1 in PC-12 lysates using LIG1 antibody.



Western blot analysis of LIG1 in HeLa, A549, HL-60 lysates using LIG1 antibody

Product Name: LIG1 Rabbit Monoclonal Antibody
Catalog #: AMRe03065



Immunohistochemistry analysis of paraffin-embedded Human tonsil using LIG1 antibody. High-pressure and temperature Sodium Citrate pH 6.0 was used for antigen retrieval.

Note

For research use only.