

Product Name: LGI1 Rabbit Monoclonal Antibody
Catalog #: AMRe03064



Summary

Production Name	LGI1 Rabbit Monoclonal Antibody
Description	Recombinant Rabbit Monoclonal antibody
Host	Rabbit
Application	WB,IP
Reactivity	Human,Mouse,Rat

Performance

Conjugation	Unconjugated
Modification	Unmodified
Isotype	IgG
Clonality	Monoclonal Antibody
Form	Liquid
Storage	Store at 4°C short term. Aliquot and store at -20°C long term. Avoid freeze/thaw cycles.
Buffer	50mM Tris-Glycine(pH 7.4), 0.15M NaCl, 40% Glycerol, 0.01% Sodium azide and 0.05% BSA
Purification	Affinity Purified

Immunogen

Gene Name	LGI1
Alternative Names	ADLTE; ADPAEF; ADPEAF; Epitempin 1; EPITEMPIN; EPT; ETL1; LGI1
Gene ID	9211
SwissProt ID	O95970

Application

Dilution Ratio	WB: 1/500-1/1000 IP: 1/20
Molecular Weight	Calculated MW: 64 kDa; Observed MW: 64 kDa

Background

Product Name: LGI1 Rabbit Monoclonal Antibody
Catalog #: AMRe03064

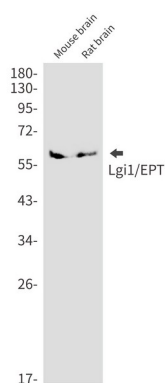


Regulates voltage-gated potassium channels assembled from KCNA1, KCNA4 and KCNAB1. It slows down channel inactivation by precluding channel closure mediated by the KCNAB1 subunit. Ligand for ADAM22 that positively regulates synaptic transmission mediated by AMPA-type glutamate receptors (By similarity).

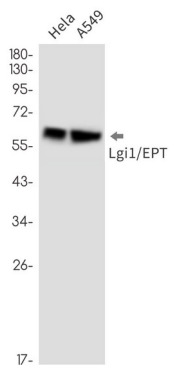
Research Area

Neuroscience

Image Data



Western blot analysis of Lgi1/EPT in mouse brain, rat brain lysates using LGI1 antibody.



Western blot analysis of Lgi1/EPT in HeLa, A549 lysates using Lgi1/EPT antibody.

Note

For research use only.