

## Summary

<b>Production Name</b>	KLF4 Rabbit Monoclonal Antibody
<b>Description</b>	Recombinant Rabbit Monoclonal antibody
<b>Host</b>	Rabbit
<b>Application</b>	WB,IHC-P,IP
<b>Reactivity</b>	Human,Mouse,Hamster

## Performance

<b>Conjugation</b>	Unconjugated
<b>Modification</b>	Unmodified
<b>Isotype</b>	IgG
<b>Clonality</b>	Monoclonal Antibody
<b>Form</b>	Liquid
<b>Storage</b>	Store at 4°C short term. Aliquot and store at -20°C long term. Avoid freeze/thaw cycles.
<b>Buffer</b>	50mM Tris-Glycine(pH 7.4), 0.15M NaCl, 40% Glycerol, 0.01% Sodium azide and 0.05% BSA
<b>Purification</b>	Affinity Purified

## Immunogen

<b>Gene Name</b>	Klf4
<b>Alternative Names</b>	EZF; Zie; Gklf
<b>Gene ID</b>	16600.0
<b>SwissProt ID</b>	Q60793

## Application

<b>Dilution Ratio</b>	WB: 1/500-1/1000 IHC: 1/50-1/100 IP: 1/20
<b>Molecular Weight</b>	Calculated MW: 52 kDa; Observed MW: 52 kDa

## Background

**Product Name: KLF4 Rabbit Monoclonal Antibody**  
**Catalog #: AMRe03058**

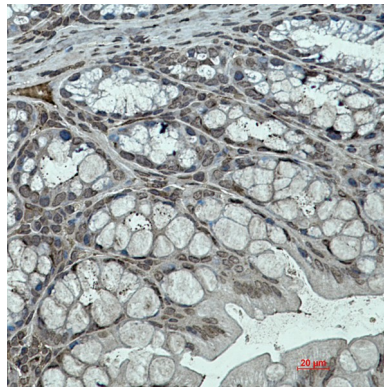


Transcription factor; can act both as activator and as repressor. Binds the 5'-CACCC-3' core sequence.

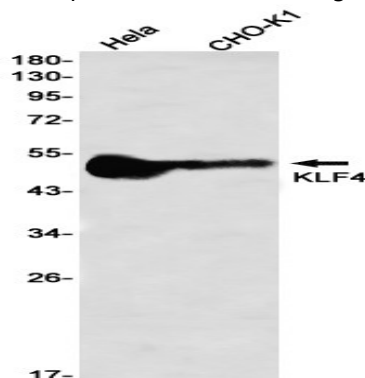
## Research Area

Epigenetics and Nuclear Signaling

## Image Data



Immunohistochemistry analysis of paraffin-embedded mouse colon using KLF4 antibody. High-pressure and temperature Sodium Citrate pH 6.0 was used for antigen retrieval.



Western blot analysis of KLF4 in HeLa, CHO-K1 lysates using KLF4 antibody.

## Note

For research use only.