
Summary

Production Name	KIFAP3 Rabbit Monoclonal Antibody
Description	Recombinant Rabbit Monoclonal antibody
Host	Rabbit
Application	WB,IHC-P
Reactivity	Human,Rat

Performance

Conjugation	Unconjugated
Modification	Unmodified
Isotype	IgG
Clonality	Monoclonal Antibody
Form	Liquid
Storage	Store at 4°C short term. Aliquot and store at -20°C long term. Avoid freeze/thaw cycles.
Buffer	50mM Tris-Glycine(pH 7.4), 0.15M NaCl, 40% Glycerol, 0.01% Sodium azide and 0.05% BSA
Purification	Affinity Purified

Immunogen

Gene Name	KIFAP3
Alternative Names	KAP3; KIF3AP; Kifap3; Kinesin associated protein 3; SMAP
Gene ID	22920
SwissProt ID	Q92845

Application

Dilution Ratio	WB: 1/500-1/1000 IHC: 1/50-1/100
Molecular Weight	Calculated MW: 91 kDa; Observed MW: 91 kDa

Background

Product Name: KIFAP3 Rabbit Monoclonal Antibody
Catalog #: AMRe03057

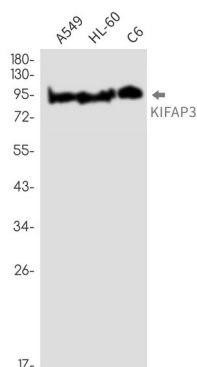


Involved in tethering the chromosomes to the spindle pole and in chromosome movement. Binds to the tail domain of the KIF3A/KIF3B heterodimer to form a heterotrimeric KIF3 complex and may regulate the membrane binding of this complex.

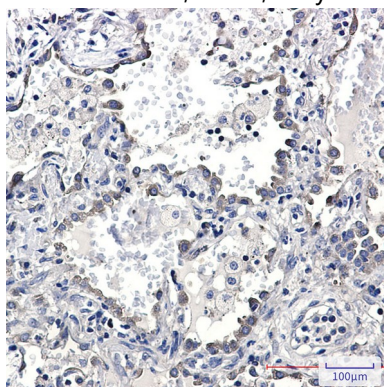
Research Area

Epigenetics and Nuclear Signaling

Image Data



Western blot analysis of KIFAP3 in A549, HL-60, C6 lysates using KIFAP3 antibody.



Immunohistochemistry analysis of paraffin-embedded Human lung cancer using KIFAP3 antibody. High-pressure and temperature Sodium Citrate pH 6.0 was used for antigen retrieval.

Note

For research use only.