

**Product Name: Junctional Adhesion Molecule 1 Rabbit
Monoclonal Antibody
Catalog #: AMRe03054**



Summary

| | |
|------------------------|---|
| Production Name | Junctional Adhesion Molecule 1 Rabbit Monoclonal Antibody |
| Description | Recombinant Rabbit Monoclonal antibody |
| Host | Rabbit |
| Application | WB,ICC/IF,IP |
| Reactivity | Human |

Performance

| | |
|---------------------|--|
| Conjugation | Unconjugated |
| Modification | Unmodified |
| Isotype | IgG |
| Clonality | Monoclonal Antibody |
| Form | Liquid |
| Storage | Store at 4°C short term. Aliquot and store at -20°C long term. Avoid freeze/thaw cycles. |
| Buffer | 50mM Tris-Glycine(pH 7.4), 0.15M NaCl, 40% Glycerol, 0.01% Sodium azide and 0.05% BSA |
| Purification | Affinity Purified |

Immunogen

| | |
|--------------------------|---|
| Gene Name | F11R |
| Alternative Names | F11R; JAM1; JCAM; Junctional adhesion molecule A; JAM-A; Junctional adhesion molecule 1; JAM-1; Platelet F11 receptor; Platelet adhesion molecule 1; PAM-1; CD321 |
| Gene ID | 50848 |
| SwissProt ID | Q9Y624 |

Application

| | |
|-------------------------|--|
| Dilution Ratio | WB: 1/500-1/1000 IF: 1/50-1/200 IP: 1/20 |
| Molecular Weight | Calculated MW: 33 kDa; Observed MW: 33 kDa |

**Product Name: Junctional Adhesion Molecule 1 Rabbit
Monoclonal Antibody
Catalog #: AMRe03054**



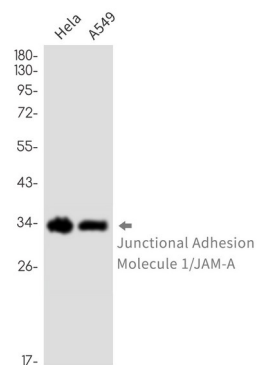
Background

Seems to play a role in epithelial tight junction formation. Appears early in primordial forms of cell junctions and recruits PARD3. The association of the PARD6-PARD3 complex may prevent the interaction of PARD3 with JAM1, thereby preventing tight junction assembly (By similarity). Plays a role in regulating monocyte transmigration involved in integrity of epithelial barrier. Involved in platelet activation. In case of orthoreovirus infection, serves as receptor for the virus.

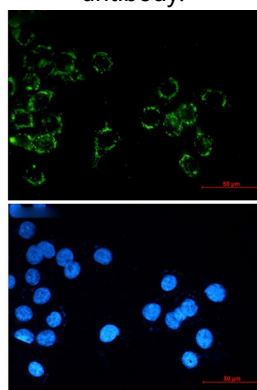
Research Area

Cardiovascular

Image Data



Western blot analysis of Junctional Adhesion Molecule 1/JAMA in HeLa, A549 lysates using Junctional Adhesion Molecule 1 antibody.



Immunocytochemistry analysis of Junctional Adhesion Molecule 1/JAMA (green) in MCF-7 using Junctional Adhesion Molecule 1/JAMA antibody, and DAPI (blue)

Note

For research use only.

**Product Name: Junctional Adhesion Molecule 1 Rabbit
Monoclonal Antibody
Catalog #: AMRe03054**

