

**Product Name: Insulin Degrading Enzyme Rabbit
Monoclonal Antibody
Catalog #: AMRe03050**

Summary

Production Name	Insulin Degrading Enzyme Rabbit Monoclonal Antibody
Description	Recombinant Rabbit Monoclonal antibody
Host	Rabbit
Application	WB,ICC/IF
Reactivity	Human

Performance

Conjugation	Unconjugated
Modification	Unmodified
Isotype	IgG
Clonality	Monoclonal Antibody
Form	Liquid
Storage	Store at 4°C short term. Aliquot and store at -20°C long term. Avoid freeze/thaw cycles.
Buffer	50mM Tris-Glycine(pH 7.4), 0.15M NaCl, 40% Glycerol, 0.01% Sodium azide and 0.05% BSA
Purification	Affinity Purified

Immunogen

Gene Name	IDE
Alternative Names	INSULYSIN; Insulin degrading enzyme; IDE
Gene ID	3416
SwissProt ID	P14735

Application

Dilution Ratio	WB: 1/500-1/1000 IF: 1/50-1/200
Molecular Weight	Calculated MW: 118 kDa; Observed MW: 118 kDa

**Product Name: Insulin Degrading Enzyme Rabbit
Monoclonal Antibody
Catalog #: AMRe03050**

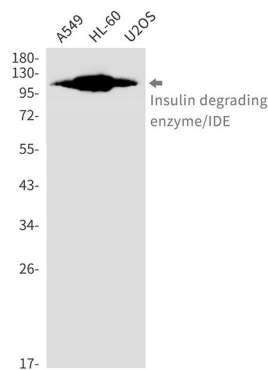
Background

This gene encodes a zinc metallopeptidase that degrades intracellular insulin, and thereby terminates insulin's activity, as well as participating in intercellular peptide signalling by degrading diverse peptides such as glucagon, amylin, bradykinin, and kallidin. The preferential affinity of this enzyme for insulin results in insulin-mediated inhibition of the degradation of other peptides such as beta-amyloid.

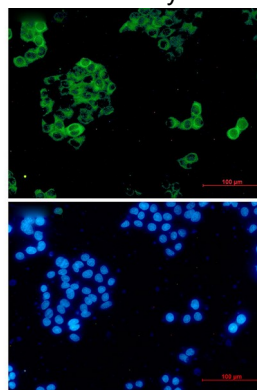
Research Area

Neuroscience

Image Data



Western blot analysis of Insulin degrading enzyme/IDE in A549, HL-60, U2OS lysates using Insulin Degrading Enzyme antibody.



Immunocytochemistry analysis of Insulin degrading enzyme/IDE (green) in HeLa using Insulin degrading enzyme/IDE antibody, and DAPI (blue)

Note

For research use only.