

**Product Name: IL-1 Receptor Accessory Protein Rabbit  
Monoclonal Antibody  
Catalog #: AMRe03046**



---

## Summary

<b>Production Name</b>	IL-1 Receptor Accessory Protein Rabbit Monoclonal Antibody
<b>Description</b>	Recombinant Rabbit Monoclonal antibody
<b>Host</b>	Rabbit
<b>Application</b>	WB,IP
<b>Reactivity</b>	Human

## Performance

<b>Conjugation</b>	Unconjugated
<b>Modification</b>	Unmodified
<b>Isotype</b>	IgG
<b>Clonality</b>	Monoclonal Antibody
<b>Form</b>	Liquid
<b>Storage</b>	Store at 4°C short term. Aliquot and store at -20°C long term. Avoid freeze/thaw cycles.
<b>Buffer</b>	50mM Tris-Glycine(pH 7.4), 0.15M NaCl, 40% Glycerol, 0.01% Sodium azide and 0.05% BSA
<b>Purification</b>	Affinity Purified

## Immunogen

<b>Gene Name</b>	IL1RAP
<b>Alternative Names</b>	IL-1 Receptor Accessory Protein; IL1R3; C3orf13; IL-1RAcP
<b>Gene ID</b>	3556
<b>SwissProt ID</b>	Q9NPH3

## Application

<b>Dilution Ratio</b>	WB: 1/500-1/1000 IP: 1/20
<b>Molecular Weight</b>	Calculated MW: 65 kDa; Observed MW: 78 kDa

**Product Name: IL-1 Receptor Accessory Protein Rabbit  
Monoclonal Antibody  
Catalog #: AMRe03046**



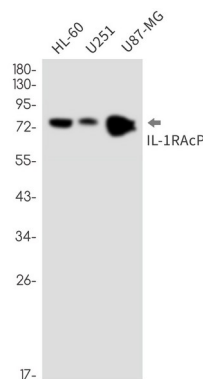
## Background

Interleukin 1 induces synthesis of acute phase and proinflammatory proteins during infection, tissue damage, or stress, by forming a complex at the cell membrane with an interleukin 1 receptor and an accessory protein. This gene encodes the interleukin 1 receptor accessory protein. The protein is a necessary part of the interleukin 1 receptor complex which initiates signalling events that result in the activation of interleukin 1-responsive genes. Alternative splicing of this gene results in two transcript variants encoding two different isoforms, one membrane-bound and one soluble. The ratio of soluble to membrane-bound forms increases during acute-phase induction or stress.

## Research Area

Immunology

## Image Data



Western blot analysis of IL-1RAcP in HL-60, U251, U87-MG lysates using IL-1 Receptor Accessory Protein antibody.

## Note

For research use only.