
Summary

Production Name	GRK2 Rabbit Monoclonal Antibody
Description	Recombinant Rabbit Monoclonal antibody
Host	Rabbit
Application	WB,IP
Reactivity	Human

Performance

Conjugation	Unconjugated
Modification	Unmodified
Isotype	IgG
Clonality	Monoclonal Antibody
Form	Liquid
Storage	Store at 4°C short term. Aliquot and store at -20°C long term. Avoid freeze/thaw cycles.
Buffer	50mM Tris-Glycine(pH 7.4), 0.15M NaCl, 40% Glycerol, 0.01% Sodium azide and 0.05% BSA
Purification	Affinity Purified

Immunogen

Gene Name	GRK2
Alternative Names	GRK2; BARK1; FLJ16718; BETA-ARK1; ADRBK1
Gene ID	156
SwissProt ID	P25098

Application

Dilution Ratio	WB: 1/500-1/1000 IP: 1/20
Molecular Weight	Calculated MW: 80 kDa; Observed MW: 80 kDa

Background

Product Name: GRK2 Rabbit Monoclonal Antibody
Catalog #: AMRe03015

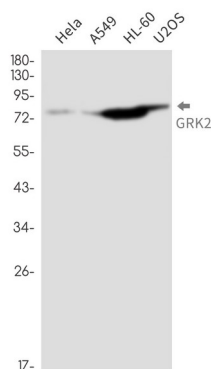


GRK2 kinase activity and cellular localization are tightly regulated by interactions with activated receptors, G-beta and G-gamma subunits, adaptor proteins, phospholipids, caveolin and calmodulin, as well as by phosphorylation. PKC phosphorylation enhances GRK2 activity by promoting its membrane localization and by abolishing the inhibitory association of calmodulin.

Research Area

Neuroscience

Image Data



Western blot analysis of GRK2 in HeLa, A549, HL-60, U2OS lysates using GRK2 antibody.

Note

For research use only.