

**Product Name: Glutathione Synthetase Rabbit  
Monoclonal Antibody  
Catalog #: AMRe03012**

---

## Summary

<b>Production Name</b>	Glutathione Synthetase Rabbit Monoclonal Antibody
<b>Description</b>	Recombinant Rabbit Monoclonal antibody
<b>Host</b>	Rabbit
<b>Application</b>	WB,IHC-P
<b>Reactivity</b>	Human,Mouse,Rat

## Performance

<b>Conjugation</b>	Unconjugated
<b>Modification</b>	Unmodified
<b>Isotype</b>	IgG
<b>Clonality</b>	Monoclonal Antibody
<b>Form</b>	Liquid
<b>Storage</b>	Store at 4°C short term. Aliquot and store at -20°C long term. Avoid freeze/thaw cycles.
<b>Buffer</b>	50mM Tris-Glycine(pH 7.4), 0.15M NaCl, 40% Glycerol, 0.01% Sodium azide and 0.05% BSA
<b>Purification</b>	Affinity Purified

## Immunogen

<b>Gene Name</b>	GSS
<b>Alternative Names</b>	Glutathione synthase; Glutathione synthetase; GSH S; GSH synthetase; GSH-S; GSHS; GSS; HEL-S-64p; HEL-S-88n
<b>Gene ID</b>	2937
<b>SwissProt ID</b>	P48637

## Application

<b>Dilution Ratio</b>	WB: 1/500-1/1000 IHC: 1/50-1/100
<b>Molecular Weight</b>	Calculated MW: 52 kDa; Observed MW: 52 kDa

**Product Name: Glutathione Synthetase Rabbit  
Monoclonal Antibody  
Catalog #: AMRe03012**

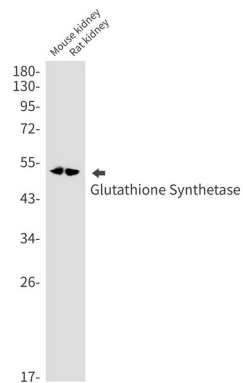
## Background

Sulfur metabolism; glutathione biosynthesis; glutathione from L-cysteine and L-glutamate: step 2/2.

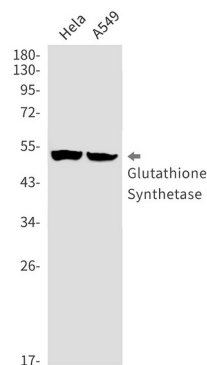
## Research Area

Signal Transduction

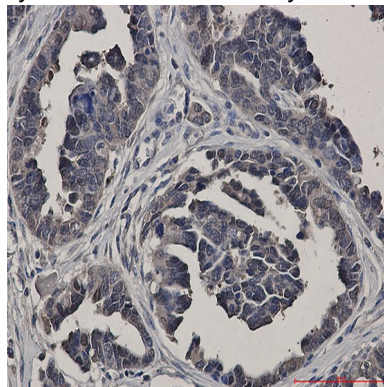
## Image Data



Western blot analysis of Glutathione Synthetase in mouse kidney, rat kidney lysates using Glutathione Synthetase antibody.



Western blot analysis of Glutathione Synthetase in HeLa, A549 lysates using Glutathione Synthetase antibody.





**Product Name: Glutathione Synthetase Rabbit  
Monoclonal Antibody  
Catalog #: AMRe03012**

---

Immunohistochemistry analysis of paraffin-embedded Human Cholangiocarcinoma using Glutathione Synthetase antibody.  
High-pressure and temperature Sodium Citrate pH 6.0 was used for antigen retrieval.

**Note**

For research use only.