
Summary

Production Name	EPS15R Rabbit Monoclonal Antibody
Description	Recombinant Rabbit Monoclonal antibody
Host	Rabbit
Application	WB,ICC/IF
Reactivity	Human

Performance

Conjugation	Unconjugated
Modification	Unmodified
Isotype	IgG
Clonality	Monoclonal Antibody
Form	Liquid
Storage	Store at 4°C short term. Aliquot and store at -20°C long term. Avoid freeze/thaw cycles.
Buffer	50mM Tris-Glycine(pH 7.4), 0.15M NaCl, 40% Glycerol, 0.01% Sodium azide and 0.05% BSA
Purification	Affinity Purified

Immunogen

Gene Name	EPS15L1
Alternative Names	EPS15R
Gene ID	58513
SwissProt ID	Q9UBC2

Application

Dilution Ratio	WB: 1/500-1/1000 IF: 1/50-1/200
Molecular Weight	Calculated MW: 94 kDa; Observed MW: 130 kDa

Background

Product Name: EPS15R Rabbit Monoclonal Antibody
Catalog #: AMRe02987

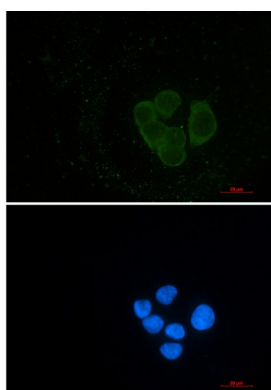


Seems to be a constitutive component of clathrin-coated pits that is required for receptor-mediated endocytosis. Involved in endocytosis of integrin beta-1 (ITGB1) and transferrin receptor (TFR); internalization of ITGB1 as DAB2-dependent cargo but not TFR seems to require association with DAB2.

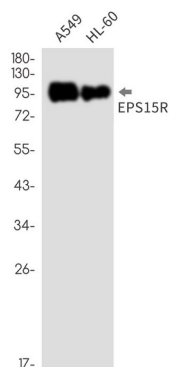
Research Area

Signal Transduction

Image Data



Immunocytochemistry analysis of EPS15R (green) in HeLa using EPS15R antibody, and DAPI (blue).



Western blot analysis of EPS15R in A549, HL-60 lysates using EPS15R antibody.

Note

For research use only.