
Summary

Production Name	EFEMP1 Rabbit Monoclonal Antibody
Description	Recombinant Rabbit Monoclonal antibody
Host	Rabbit
Application	WB,IHC-P,IP
Reactivity	Human

Performance

Conjugation	Unconjugated
Modification	Unmodified
Isotype	IgG
Clonality	Monoclonal Antibody
Form	Liquid
Storage	Store at 4°C short term. Aliquot and store at -20°C long term. Avoid freeze/thaw cycles.
Buffer	50mM Tris-Glycine(pH 7.4), 0.15M NaCl, 40% Glycerol, 0.01% Sodium azide and 0.05% BSA
Purification	Affinity Purified

Immunogen

Gene Name	EFEMP1
Alternative Names	DHRD; DRAD; FBNL; MLVT; MTLV; S1-5; FBLN3; FIBL-3; Fibulin-3
Gene ID	2202
SwissProt ID	Q12805

Application

Dilution Ratio	WB: 1/500-1/1000 IHC: 1/50-1/100 IP: 1/20
Molecular Weight	Calculated MW: 55 kDa; Observed MW: 55 kDa

Background

Product Name: EFEMP1 Rabbit Monoclonal Antibody
Catalog #: AMRe02980

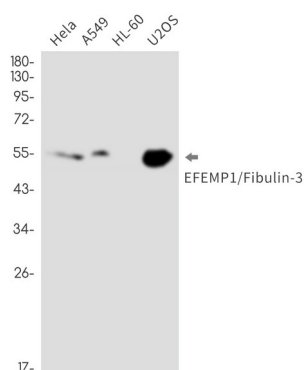


Binds EGFR, the EGF receptor, inducing EGFR autophosphorylation and the activation of downstream signaling pathways.

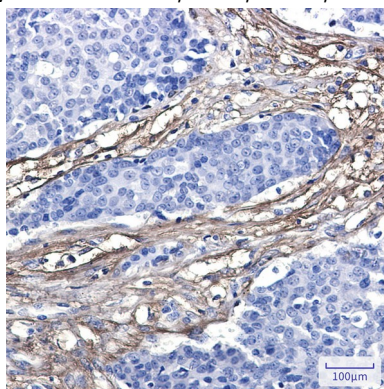
Research Area

-

Image Data



Western blot analysis of EFEMP1/Fibulin3 in HeLa, A549, HL-60, U2OS lysates using EFEMP1 antibody.



Immunohistochemistry analysis of paraffin-embedded Human breast cancer using EFEMP1/Fibulin3 antibody. High-pressure and temperature Sodium Citrate pH 6.0 was used for antigen retrieval.

Note

For research use only.