

**Product Name: Cytochrome P450 2D6 Rabbit
Monoclonal Antibody
Catalog #: AMRe02962**

Summary

Production Name	Cytochrome P450 2D6 Rabbit Monoclonal Antibody
Description	Recombinant Rabbit Monoclonal antibody
Host	Rabbit
Application	WB,IHC-F,IHC-P,ICC/IF
Reactivity	Human

Performance

Conjugation	Unconjugated
Modification	Unmodified
Isotype	IgG
Clonality	Monoclonal Antibody
Form	Liquid
Storage	Store at 4°C short term. Aliquot and store at -20°C long term. Avoid freeze/thaw cycles.
Buffer	50mM Tris-Glycine(pH 7.4), 0.15M NaCl, 40% Glycerol, 0.01% Sodium azide and 0.05% BSA
Purification	Affinity Purified

Immunogen

Gene Name	CYP2D6
Alternative Names	CYP2D6; CYP2DL1; Cytochrome P450 2D6; CYP11D6; Cytochrome P450-DB1; Debrisoquine 4-hydroxylase
Gene ID	1565
SwissProt ID	P10635

Application

Dilution Ratio	WB: 1/500-1/1000 IHC: 1/50-1/100 IF: 1/50-1/200
Molecular Weight	Calculated MW: 56 kDa; Observed MW: 50 kDa

**Product Name: Cytochrome P450 2D6 Rabbit
Monoclonal Antibody
Catalog #: AMRe02962**

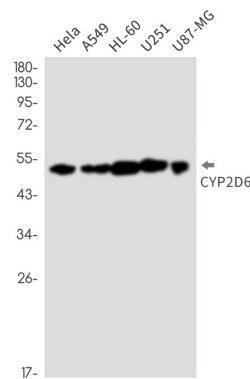
Background

Cytochrome P450 2D6 is a member of the cytochrome P450 superfamily of enzymes. The cytochrome P450 proteins are monooxygenases which catalyze many reactions involved in drug metabolism and synthesis of cholesterol, steroids and other lipids.

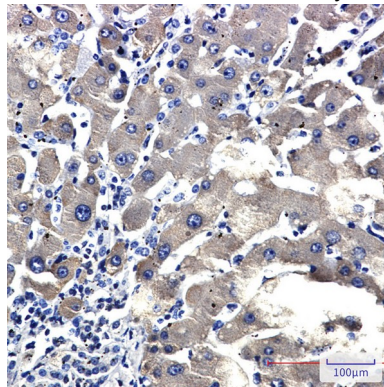
Research Area

Cardiovascular

Image Data

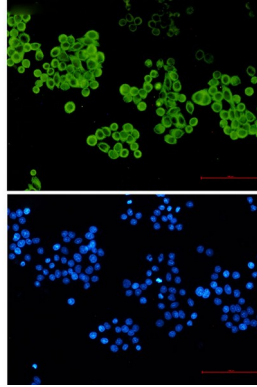


Western blot analysis of CYP2D6 in HeLa, A549, HL-60, U251, U87-MG lysates using Cytochrome P450 2D6 antibody.



Immunohistochemistry analysis of paraffin-embedded liver cancer using CYP2D6 antibody. High-pressure and temperature Sodium Citrate pH 6.0 was used for antigen retrieval.

**Product Name: Cytochrome P450 2D6 Rabbit
Monoclonal Antibody
Catalog #: AMRe02962**



Immunocytochemistry analysis of CYP2D6 (green) in hela using CYP2D6 antibody, and DAPI(blue)

Note

For research use only.