
Summary

Production Name	CSNK2A1 Rabbit Monoclonal Antibody
Description	Recombinant Rabbit Monoclonal antibody
Host	Rabbit
Application	WB
Reactivity	Human,Mouse,Rat

Performance

Conjugation	Unconjugated
Modification	Unmodified
Isotype	IgG
Clonality	Monoclonal Antibody
Form	Liquid
Storage	Store at 4°C short term. Aliquot and store at -20°C long term. Avoid freeze/thaw cycles.
Buffer	50mM Tris-Glycine(pH 7.4), 0.15M NaCl, 40% Glycerol, 0.01% Sodium azide and 0.05% BSA
Purification	Affinity Purified

Immunogen

Gene Name	CSNK2A1
Alternative Names	CSNK2A1; CK2A1; Casein kinase II subunit alpha; CK II alpha
Gene ID	1457
SwissProt ID	P68400

Application

Dilution Ratio	WB: 1/500-1/1000
Molecular Weight	Calculated MW: 45 kDa; Observed MW: 45 kDa

Background

Product Name: CSNK2A1 Rabbit Monoclonal Antibody
Catalog #: AMRe02955

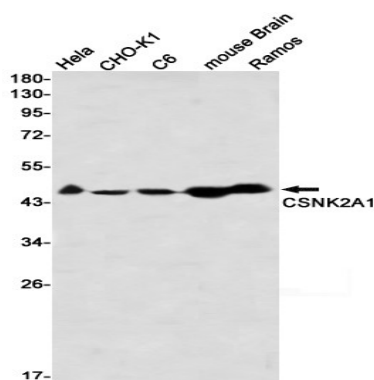


Catalytic subunit of a constitutively active serine/threonine-protein kinase complex that phosphorylates a large number of substrates containing acidic residues C-terminal to the phosphorylated serine or threonine. Regulates numerous cellular processes, such as cell cycle progression, apoptosis and transcription, as well as viral infection. May act as a regulatory node which integrates and coordinates numerous signals leading to an appropriate cellular response.

Research Area

Cell Biology

Image Data



Western blot analysis of CSNK2A1 in Hela, CHO-K1, C6, mouse Brain, Ramos lysates using CSNK2A1 antibody.

Note

For research use only.