

Summary

Production Name	CLSTN1 Rabbit Monoclonal Antibody
Description	Recombinant Rabbit Monoclonal antibody
Host	Rabbit
Application	WB,IHC-F,IHC-P,ICC/IF
Reactivity	Human,Mouse,Hamster

Performance

Conjugation	Unconjugated
Modification	Unmodified
Isotype	IgG
Clonality	Monoclonal Antibody
Form	Liquid
Storage	Store at 4°C short term. Aliquot and store at -20°C long term. Avoid freeze/thaw cycles.
Buffer	50mM Tris-Glycine(pH 7.4), 0.15M NaCl, 40% Glycerol, 0.01% Sodium azide and 0.05% BSA
Purification	Affinity Purified

Immunogen

Gene Name	CLSTN1
Alternative Names	Alcadein alpha 1; alalpha1; alalpha2; Calsyntenin 1; CDHR12; Clstn1; CS1; CSTN1; PIK3CD; XB31alpha
Gene ID	22883
SwissProt ID	O94985

Application

Dilution Ratio	WB: 1/500-1/1000 IHC: 1/50-1/100 IF: 1/50-1/200
Molecular Weight	Calculated MW: 110 kDa; Observed MW: 115 kDa

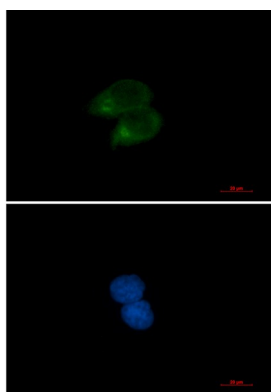
Background

Induces KLC1 association with vesicles and functions as a cargo in axonal anterograde transport. Complex formation with APBA2 and APP, stabilizes APP metabolism and enhances APBA2-mediated suppression of beta-APP40 secretion, due to the retardation of intracellular APP maturation.

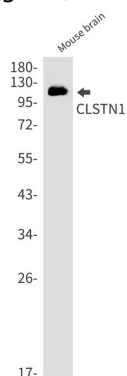
Research Area

Neuroscience

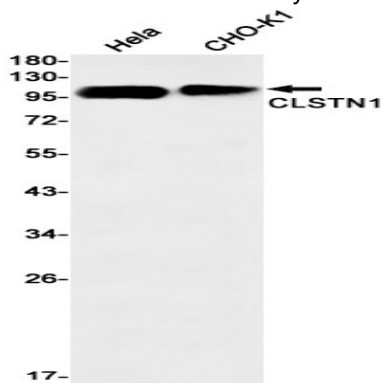
Image Data



Immunocytochemistry analysis of CLSTN1 (green) in HeLa using CLSTN1 antibody, and DAPI (blue).



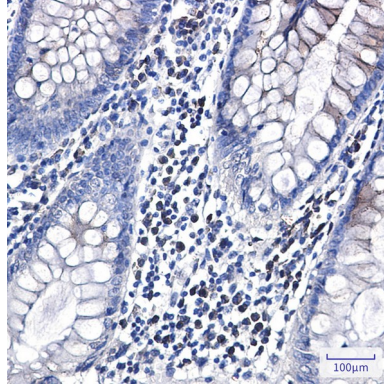
Western blot analysis of CLSTN1 in mouse brain lysates using CLSTN1 antibody.



Product Name: CLSTN1 Rabbit Monoclonal Antibody
Catalog #: AMRe02949



Western blot analysis of CLSTN1 in Hela, CHO-K1 lysates using CLSTN1 antibody



Immunohistochemistry analysis of paraffin-embedded Human colon cancer using CLSTN1 antibody. High-pressure and temperature Sodium Citrate pH 6.0 was used for antigen retrieval.

Note

For research use only.