

Summary

Production Name	CLIC1 Rabbit Monoclonal Antibody
Description	Recombinant Rabbit Monoclonal antibody
Host	Rabbit
Application	WB,ICC/IF,IP
Reactivity	Human,Mouse,Rat,Hamster

Performance

Conjugation	Unconjugated
Modification	Unmodified
Isotype	IgG
Clonality	Monoclonal Antibody
Form	Liquid
Storage	Store at 4°C short term. Aliquot and store at -20°C long term. Avoid freeze/thaw cycles.
Buffer	50mM Tris-Glycine(pH 7.4), 0.15M NaCl, 40% Glycerol, 0.01% Sodium azide and 0.05% BSA
Purification	Affinity Purified

Immunogen

Gene Name	CLIC1
Alternative Names	Chloride intracellular channel protein 1; Chloride channel ABP; Nuclear chloride ion channel 27; NCC27; Regulatory nuclear chloride ion channel protein; hRNCC
Gene ID	1192
SwissProt ID	O00299

Application

Dilution Ratio	WB: 1/500-1/1000 IF: 1/50-1/200 IP: 1/20
Molecular Weight	Calculated MW: 27 kDa; Observed MW: 27 kDa

Product Name: CLIC1 Rabbit Monoclonal Antibody
Catalog #: AMRe02946



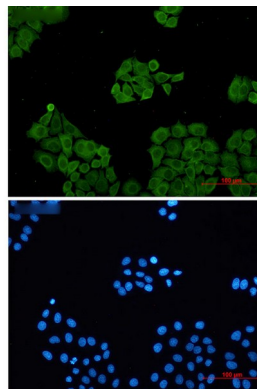
Background

Can insert into membranes and form chloride ion channels.

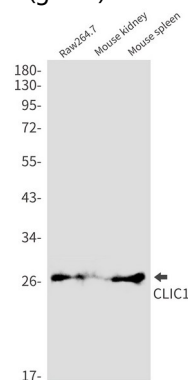
Research Area

Signal Transduction

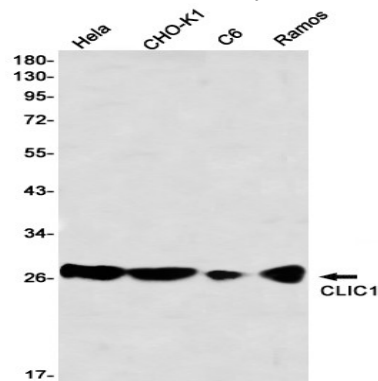
Image Data



Immunocytochemistry analysis of CLIC1 (green) in HeLa using CLIC1 antibody, and DAPI (blue).



Western blot analysis of CLIC1 in Raw264.7, mouse kidney, mouse spleen lysates using CLIC1 antibody.



Western blot analysis of CLIC1 in HeLa, CHO-K1, C6, Ramos lysates using CLIC1 antibody

Product Name: CLIC1 Rabbit Monoclonal Antibody
Catalog #: AMRe02946



Note

For research use only.