

Summary

Production Name	CEP55 Rabbit Monoclonal Antibody
Description	Recombinant Rabbit Monoclonal antibody
Host	Rabbit
Application	WB,ICC/IF
Reactivity	Human,Rat

Performance

Conjugation	Unconjugated
Modification	Unmodified
Isotype	IgG
Clonality	Monoclonal Antibody
Form	Liquid
Storage	Store at 4°C short term. Aliquot and store at -20°C long term. Avoid freeze/thaw cycles.
Buffer	50mM Tris-Glycine(pH 7.4), 0.15M NaCl, 40% Glycerol, 0.01% Sodium azide and 0.05% BSA
Purification	Affinity Purified

Immunogen

Gene Name	CEP55
Alternative Names	CEP55; C10orf3; URCC6; Centrosomal protein of 55 kDa; Cep55; Up-regulated in colon cancer 6
Gene ID	55165
SwissProt ID	Q53EZ4

Application

Dilution Ratio	WB: 1/500-1/1000 IF: 1/50-1/200
Molecular Weight	Calculated MW: 54 kDa; Observed MW: 54 kDa

Product Name: CEP55 Rabbit Monoclonal Antibody
Catalog #: AMRe02942



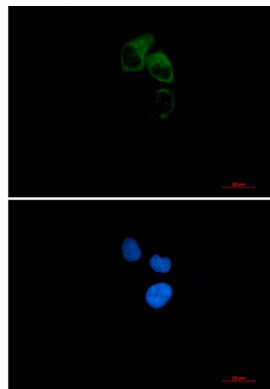
Background

Plays a role in mitotic exit and cytokinesis (PubMed:16198290, PubMed:17853893)

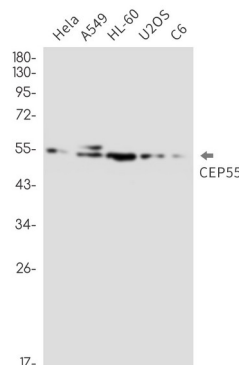
Research Area

Cell Biology

Image Data



Immunocytochemistry analysis of CEP55 (green) in HeLa using CEP55 antibody, and DAPI (blue).



Western blot analysis of CEP55 in HeLa, A549, HL-60, U2OS, C6 lysates using CEP55 antibody.

Note

For research use only.