
Summary

| | |
|------------------------|--|
| Production Name | Caspase 6 Rabbit Monoclonal Antibody |
| Description | Recombinant Rabbit Monoclonal antibody |
| Host | Rabbit |
| Application | WB,IHC-P |
| Reactivity | Human |

Performance

| | |
|---------------------|--|
| Conjugation | Unconjugated |
| Modification | Unmodified |
| Isotype | IgG |
| Clonality | Monoclonal Antibody |
| Form | Liquid |
| Storage | Store at 4°C short term. Aliquot and store at -20°C long term. Avoid freeze/thaw cycles. |
| Buffer | 50mM Tris-Glycine(pH 7.4), 0.15M NaCl, 40% Glycerol, 0.01% Sodium azide and 0.05% BSA |
| Purification | Affinity Purified |

Immunogen

| | |
|--------------------------|--|
| Gene Name | CASP6 |
| Alternative Names | CASP6; MCH2; Caspase-6; CASP-6; Apoptotic protease Mch-2 |
| Gene ID | 839 |
| SwissProt ID | P55212 |

Application

| | |
|-------------------------|---|
| Dilution Ratio | WB: 1/500-1/1000 IHC: 1/50-1/100 |
| Molecular Weight | Calculated MW: 33 kDa; Observed MW: 11,33 kDa |

Background

Product Name: Caspase 6 Rabbit Monoclonal Antibody
Catalog #: AMRe02927

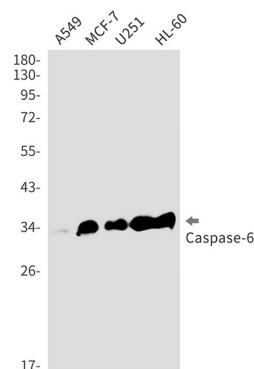


Caspase-6 (Mch2) is one of the major executioner caspases functioning in cellular apoptotic processes. Upon apoptotic stimulation, initiator caspases such as caspase-9 are cleaved and activated. The activated upstream caspases further process downstream executioner caspases, such as caspase-3 and caspase-6, by cleaving them into large and small subunits, thereby initiating a caspase cascade leading to apoptosis. One of the major targets for caspase-6 is the membrane associated protein lamin A.

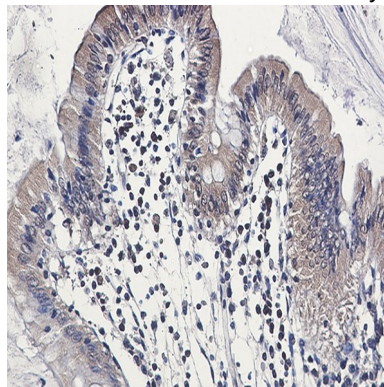
Research Area

Cell Biology

Image Data



Western blot analysis of Caspase6 in A549, MCF-7, U251, HL-60 lysates using Caspase 6 antibody.



Immunohistochemistry analysis of paraffin-embedded Human colon cancer using Caspase6 antibody. High-pressure and temperature Sodium Citrate pH 6.0 was used for antigen retrieval.

Note

For research use only.