

Product Name: Casein Kinase 2 beta Rabbit Monoclonal Antibody
Catalog #: AMRe02926

Summary

Production Name	Casein Kinase 2 beta Rabbit Monoclonal Antibody
Description	Recombinant Rabbit Monoclonal antibody
Host	Rabbit
Application	WB,IHC-F,IHC-P,ICC/IF
Reactivity	Human,Mouse,Rat

Performance

Conjugation	Unconjugated
Modification	Unmodified
Isotype	IgG
Clonality	Monoclonal Antibody
Form	Liquid
Storage	Store at 4°C short term. Aliquot and store at -20°C long term. Avoid freeze/thaw cycles.
Buffer	50mM Tris-Glycine(pH 7.4), 0.15M NaCl, 40% Glycerol, 0.01% Sodium azide and 0.05% BSA
Purification	Affinity Purified

Immunogen

Gene Name	CSNK2B
Alternative Names	CSNK2B; CK2N; G5A; Casein kinase II subunit beta; CK II beta; Phosvitin; Protein G5a
Gene ID	1460
SwissProt ID	P67870

Application

Dilution Ratio	WB: 1/500-1/1000 IHC: 1/50-1/100 IF: 1/50-1/200
Molecular Weight	Calculated MW: 25 kDa; Observed MW: 25 kDa

Product Name: Casein Kinase 2 beta Rabbit Monoclonal Antibody
Catalog #: AMRe02926



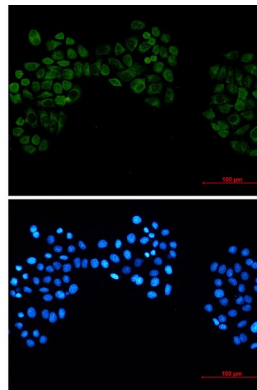
Background

Participates in Wnt signaling (By similarity). Plays a complex role in regulating the basal catalytic activity of the alpha subunit.

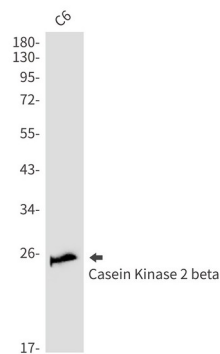
Research Area

Cell Biology

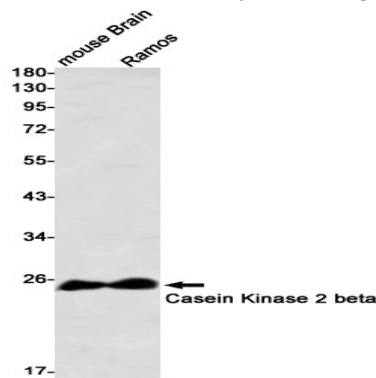
Image Data



Immunocytochemistry analysis of Casein Kinase 2 beta (green) in HeLa using Casein Kinase 2 beta antibody, and DAPI (blue).



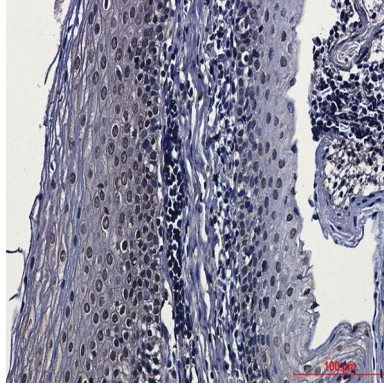
Western blot analysis of Casein Kinase 2 beta in C6 lysates using Casein Kinase 2 beta antibody.



Product Name: Casein Kinase 2 beta Rabbit Monoclonal Antibody
Catalog #: AMRe02926



Western blot analysis of Casein Kinase 2 beta in mouse Brain, Ramos lysates using Casein Kinase 2 beta antibody



Immunohistochemistry analysis of paraffin-embedded Human tonsil using Casein Kinase 2 beta antibody. High-pressure and temperature Sodium Citrate pH 6.0 was used for antigen retrieval.

Note

For research use only.