

Summary

| | |
|------------------------|--|
| Production Name | Calumenin Rabbit Monoclonal Antibody |
| Description | Recombinant Rabbit Monoclonal antibody |
| Host | Rabbit |
| Application | WB,IHC-P |
| Reactivity | Human,Rat |

Performance

| | |
|---------------------|--|
| Conjugation | Unconjugated |
| Modification | Unmodified |
| Isotype | IgG |
| Clonality | Monoclonal Antibody |
| Form | Liquid |
| Storage | Store at 4°C short term. Aliquot and store at -20°C long term. Avoid freeze/thaw cycles. |
| Buffer | 50mM Tris-Glycine(pH 7.4), 0.15M NaCl, 40% Glycerol, 0.01% Sodium azide and 0.05% BSA |
| Purification | Affinity Purified |

Immunogen

| | |
|--------------------------|--|
| Gene Name | CALU CALU; CALU_HUMAN; Calumenin 1; Calumenin 2; Calumenin; Crocalbin; crocalbin-like |
| Alternative Names | protein; FLJ90608; IEF SSP 9302; multiple EF-hand protein; OTTHUMP00000212712; OTTHUMP00000212713; OTTHUMP00000212714; OTTHUMP00000212715. |
| Gene ID | 813 |
| SwissProt ID | O43852 |

Application

| | |
|-------------------------|--|
| Dilution Ratio | WB: 1/500-1/1000 IHC: 1/50-1/100 |
| Molecular Weight | Calculated MW: 37 kDa; Observed MW: 47 kDa |

Product Name: Calumenin Rabbit Monoclonal Antibody
Catalog #: AMRe02924



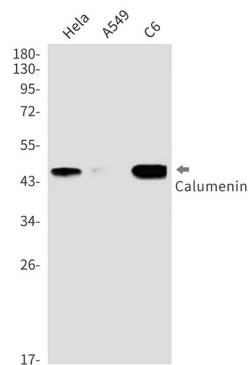
Background

The product of this gene is a calcium-binding protein localized in the endoplasmic reticulum (ER) and it is involved in such ER functions as protein folding and sorting. This protein belongs to a family of multiple EF-hand proteins (CERC) that include reticulocalbin, ERC-55, and Cab45 and the product of this gene. Alternatively spliced transcript variants encoding different isoforms have been identified. [provided by RefSeq, Oct 2008]

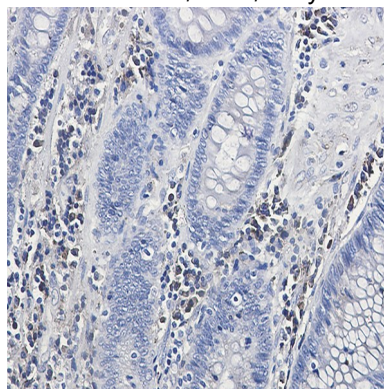
Research Area

Tags & Cell Markers

Image Data



Western blot analysis of Calumenin in HeLa, A549, C6 lysates using Calumenin antibody.



Immunohistochemistry analysis of paraffin-embedded Human colon cancer using Calumenin antibody. High-pressure and temperature Sodium Citrate pH 6.0 was used for antigen retrieval.

Note

For research use only.