

## Summary

<b>Production Name</b>	CAB39 Rabbit Monoclonal Antibody
<b>Description</b>	Recombinant Rabbit Monoclonal antibody
<b>Host</b>	Rabbit
<b>Application</b>	WB,IHC-P,IP
<b>Reactivity</b>	Human,Mouse,Rat

## Performance

<b>Conjugation</b>	Unconjugated
<b>Modification</b>	Unmodified
<b>Isotype</b>	IgG
<b>Clonality</b>	Monoclonal Antibody
<b>Form</b>	Liquid
<b>Storage</b>	Store at 4°C short term. Aliquot and store at -20°C long term. Avoid freeze/thaw cycles.
<b>Buffer</b>	50mM Tris-Glycine(pH 7.4), 0.15M NaCl, 40% Glycerol, 0.01% Sodium azide and 0.05% BSA
<b>Purification</b>	Affinity Purified

## Immunogen

<b>Gene Name</b>	CAB39
<b>Alternative Names</b>	MO25; CGI-66
<b>Gene ID</b>	51719
<b>SwissProt ID</b>	Q9Y376

## Application

<b>Dilution Ratio</b>	WB: 1/500-1/1000 IHC: 1/50-1/100 IP: 1/20
<b>Molecular Weight</b>	Calculated MW: 40 kDa; Observed MW: 40 kDa

## Background

**Product Name: CAB39 Rabbit Monoclonal Antibody**  
**Catalog #: AMRe02920**

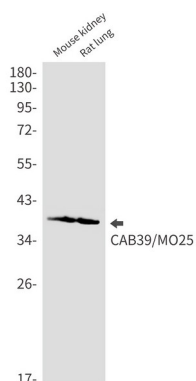


Component of a complex that binds and activates STK11/LKB1.

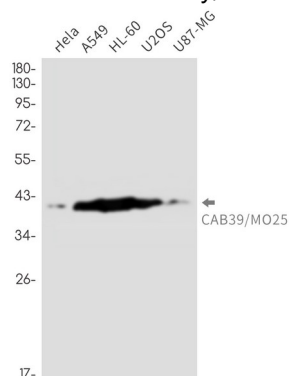
## Research Area

Signal Transduction

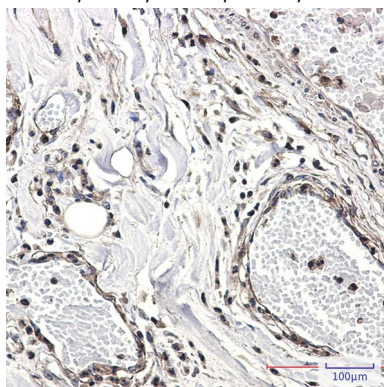
## Image Data



Western blot analysis of CAB39/MO25 in mouse kidney, rat lung lysates using CAB39 antibody.



Western blot analysis of CAB39/MO25 in HeLa, A549, HL-60, U2OS, U87-MG lysates using CAB39/MO25 antibody.



Immunohistochemistry analysis of paraffin-embedded Human Cholangiocarcinoma using CAB39/MO25 antibody. High-pressure and temperature Sodium Citrate pH 6.0 was used for antigen retrieval.

**Product Name: CAB39 Rabbit Monoclonal Antibody**  
**Catalog #: AMRe02920**

---



**Note**

For research use only.