

**Product Name: Actin Related Protein 2 Rabbit  
Monoclonal Antibody  
Catalog #: AMRe02902**

---

## Summary

<b>Production Name</b>	Actin Related Protein 2 Rabbit Monoclonal Antibody
<b>Description</b>	Recombinant Rabbit Monoclonal antibody
<b>Host</b>	Rabbit
<b>Application</b>	WB,ICC/IF
<b>Reactivity</b>	Human,Mouse,Rat

## Performance

<b>Conjugation</b>	Unconjugated
<b>Modification</b>	Unmodified
<b>Isotype</b>	IgG
<b>Clonality</b>	Monoclonal Antibody
<b>Form</b>	Liquid
<b>Storage</b>	Store at 4°C short term. Aliquot and store at -20°C long term. Avoid freeze/thaw cycles.
<b>Buffer</b>	50mM Tris-Glycine(pH 7.4), 0.15M NaCl, 40% Glycerol, 0.01% Sodium azide and 0.05% BSA
<b>Purification</b>	Affinity Purified

## Immunogen

<b>Gene Name</b>	ACTR2
<b>Alternative Names</b>	ACTR2; ARP2; ARP2/3 COMPLEX
<b>Gene ID</b>	10097
<b>SwissProt ID</b>	P61160

## Application

<b>Dilution Ratio</b>	WB: 1/500-1/1000 IF: 1/50-1/200
<b>Molecular Weight</b>	Calculated MW: 45 kDa; Observed MW: 45 kDa

**Product Name: Actin Related Protein 2 Rabbit  
Monoclonal Antibody  
Catalog #: AMRe02902**

---

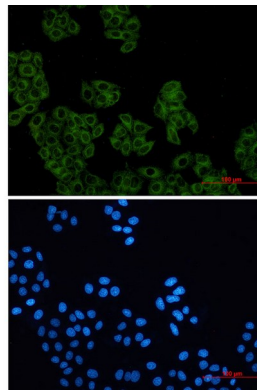
## Background

Functions as ATP-binding component of the Arp2/3 complex which is involved in regulation of actin polymerization and together with an activating nucleation-promoting factor (NPF) mediates the formation of branched actin networks.

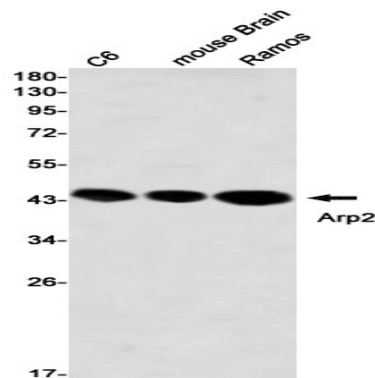
## Research Area

Immunology

## Image Data



Immunocytochemistry analysis of Actin Related Protein 2 (green) in HeLa using Actin Related Protein 2 antibody, and DAPI (blue).



Western blot analysis of Arp2 in C6, mouse Brain, Ramos lysates using Arp2 antibody.

## Note

For research use only.