

Product Name: alpha 1-Antitrypsin Rabbit Monoclonal Antibody
Catalog #: AMRe02894



Summary

Production Name	alpha 1-Antitrypsin Rabbit Monoclonal Antibody
Description	Recombinant Rabbit Monoclonal antibody
Host	Rabbit
Application	WB,IP
Reactivity	Human

Performance

Conjugation	Unconjugated
Modification	Unmodified
Isotype	IgG
Clonality	Monoclonal Antibody
Form	Liquid
Storage	Store at 4°C short term. Aliquot and store at -20°C long term. Avoid freeze/thaw cycles.
Buffer	50mM Tris-Glycine(pH 7.4), 0.15M NaCl, 40% Glycerol, 0.01% Sodium azide and 0.05% BSA
Purification	Affinity Purified

Immunogen

Gene Name	SERPINA1
Alternative Names	SERPINA1; AAT; PI; Alpha-1-antitrypsin; Alpha-1 protease inhibitor; Alpha-1-antiproteinase; Serpin A1
Gene ID	5265
SwissProt ID	P01009

Application

Dilution Ratio	WB: 1/500-1/1000 IP: 1/20
Molecular Weight	Calculated MW: 47 kDa; Observed MW: 55 kDa

Product Name: alpha 1-Antitrypsin Rabbit Monoclonal Antibody
Catalog #: AMRe02894



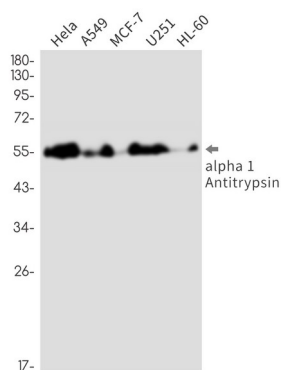
Background

SERPINA1 is secreted and is a serine protease inhibitor which its targets include elastase, plasmin, collagenase, thrombin, leucocytic proteases, trypsin, chymotrypsin, and plasminogen activator. Inhibitor of serine proteases. Its primary target is elastase, but it also has a moderate affinity for plasmin and thrombin.

Research Area

Cell Biology

Image Data



Western blot analysis of alpha 1 Antitrypsin in HeLa, A549, MCF-7, U251, HL-60 lysates using alpha 1-Antitrypsin antibody.

Note

For research use only.