

Product Name: 14-3-3 gamma Rabbit Monoclonal Antibody
Catalog #: AMRe02881

Summary

Production Name	14-3-3 gamma Rabbit Monoclonal Antibody
Description	Recombinant Rabbit Monoclonal antibody
Host	Rabbit
Application	WB
Reactivity	Human,Mouse,Rat

Performance

Conjugation	Unconjugated
Modification	Unmodified
Isotype	IgG
Clonality	Monoclonal Antibody
Form	Liquid
Storage	Store at 4°C short term. Aliquot and store at -20°C long term. Avoid freeze/thaw cycles.
Buffer	50mM Tris-Glycine(pH 7.4), 0.15M NaCl, 40% Glycerol, 0.01% Sodium azide and 0.05% BSA
Purification	Affinity Purified

Immunogen

Gene Name	YWHAG
Alternative Names	YWHAG; 14-3-3 protein gamma; Protein kinase C inhibitor protein 1; KCIP-1
Gene ID	7532
SwissProt ID	P61981

Application

Dilution Ratio	WB: 1/500-1/1000
Molecular Weight	Calculated MW: 28 kDa; Observed MW: 28 kDa

Product Name: 14-3-3 gamma Rabbit Monoclonal Antibody
Catalog #: AMRe02881

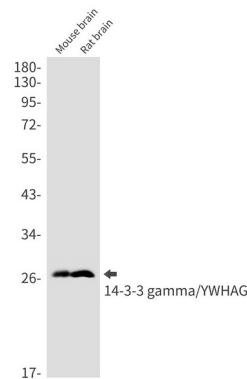
Background

Induce target protein conformational changes that modify target protein function. Distinct temporal and spatial expression patterns of 14-3-3 isoforms have been observed in development and in acute response to extracellular signals and drugs, suggesting that 14-3-3 isoforms may perform different functions despite their sequence similarities.

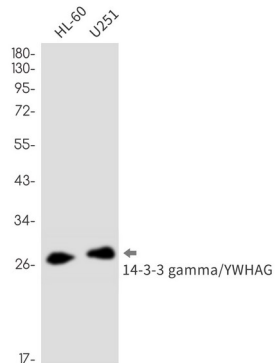
Research Area

Neuroscience

Image Data



Western blot analysis of 14-3-3 gamma/YWHAG in mouse brain, rat brain lysates using 14-3-3 gamma antibody.



Western blot analysis of 14-3-3 gamma/YWHAG in HL-60, U251 lysates using 14-3-3 gamma/YWHAG antibody.

Note

For research use only.