

Product Name: 14-3-3 alpha/beta Rabbit Monoclonal Antibody
Catalog #: AMRe02880



Summary

| | |
|------------------------|--|
| Production Name | 14-3-3 alpha/beta Rabbit Monoclonal Antibody |
| Description | Recombinant Rabbit Monoclonal antibody |
| Host | Rabbit |
| Application | WB,IHC-P,IP |
| Reactivity | Human,Mouse,Rat |

Performance

| | |
|---------------------|--|
| Conjugation | Unconjugated |
| Modification | Unmodified |
| Isotype | IgG |
| Clonality | Monoclonal Antibody |
| Form | Liquid |
| Storage | Store at 4°C short term. Aliquot and store at -20°C long term. Avoid freeze/thaw cycles. |
| Buffer | 50mM Tris-Glycine(pH 7.4), 0.15M NaCl, 40% Glycerol, 0.01% Sodium azide and 0.05% BSA |
| Purification | Affinity Purified |

Immunogen

| | |
|--------------------------|--|
| Gene Name | YWHAB |
| Alternative Names | YWHAB; 14-3-3 protein beta/alpha; Protein 1054; Protein kinase C inhibitor protein 1; KCIP-1 |
| Gene ID | 7529 |
| SwissProt ID | P31946 |

Application

| | |
|-------------------------|--|
| Dilution Ratio | WB: 1/500-1/1000 IHC: 1/50-1/100 IP: 1/20 |
| Molecular Weight | Calculated MW: 28 kDa; Observed MW: 28 kDa |

Product Name: 14-3-3 alpha/beta Rabbit Monoclonal Antibody
Catalog #: AMRe02880



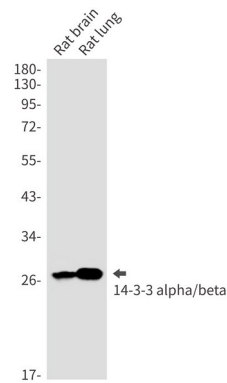
Background

Adapter protein implicated in the regulation of a large spectrum of both general and specialized signaling pathways. Binds to a large number of partners, usually by recognition of a phosphoserine or phosphothreonine motif. Binding generally results in the modulation of the activity of the binding partner. Negative regulator of osteogenesis.

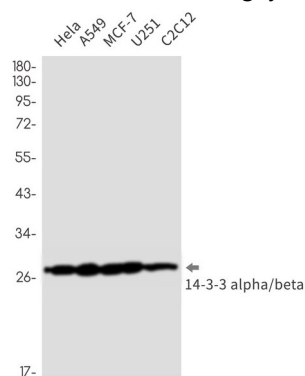
Research Area

Neuroscience

Image Data

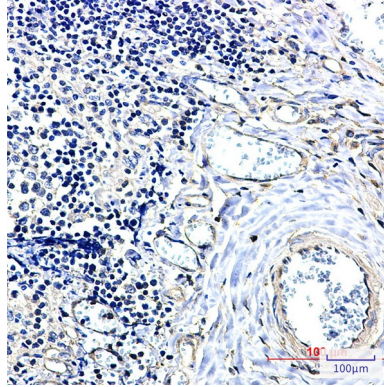


Western blot analysis of 14-3-3 alpha/beta in rat brain, rat lung lysates using 14-3-3 alpha/beta antibody.



Western blot analysis of 14-3-3 alpha/beta in HeLa, A549, MCF-7, U251, C2C12 lysates using 14-3-3 alpha/beta antibody.

Product Name: 14-3-3 alpha/beta Rabbit Monoclonal Antibody
Catalog #: AMRe02880



Immunohistochemistry analysis of paraffin-embedded Human tonsil using 14-3-3 alpha/beta antibody. High-pressure and temperature Sodium Citrate pH 6.0 was used for antigen retrieval.

Note

For research use only.