

**Product Name: Phospho-PKC zeta/lambda
(Thr410/Thr412) Rabbit Monoclonal Antibody
Catalog #: AMRe02866**

Summary

Production Name	Phospho-PKC zeta/lambda (Thr410/Thr412) Rabbit Monoclonal Antibody
Description	Recombinant Rabbit Monoclonal antibody
Host	Rabbit
Application	WB,IHC-P
Reactivity	Human,Mouse

Performance

Conjugation	Unconjugated
Modification	Phosphorylated
Isotype	IgG
Clonality	Monoclonal Antibody
Form	Liquid
Storage	Store at 4°C short term. Aliquot and store at -20°C long term. Avoid freeze/thaw cycles.
Buffer	50mM Tris-Glycine(pH 7.4), 0.15M NaCl, 40% Glycerol, 0.01% Sodium azide and 0.05% BSA
Purification	Affinity Purified

Immunogen

Gene Name	PRKCG
Alternative Names	PRKCG; PKCG; Protein kinase C gamma type; PKC-gamma
Gene ID	5582
SwissProt ID	P05129

Application

Dilution Ratio	WB: 1/500-1/1000 IHC: 1/50-1/100
Molecular Weight	Calculated MW: 78 kDa; Observed MW: 78 kDa

**Product Name: Phospho-PKC zeta/lambda
(Thr410/Thr412) Rabbit Monoclonal Antibody**
Catalog #: AMRe02866

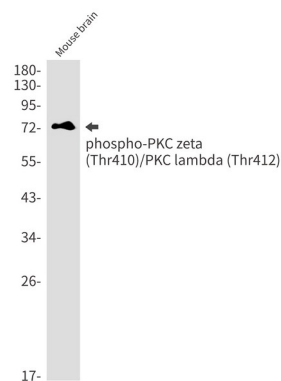
Background

This is a calcium-activated, phospholipid-dependent, serine- and threonine-specific enzyme.

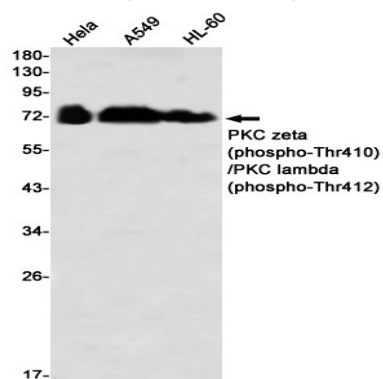
Research Area

Signal Transduction

Image Data

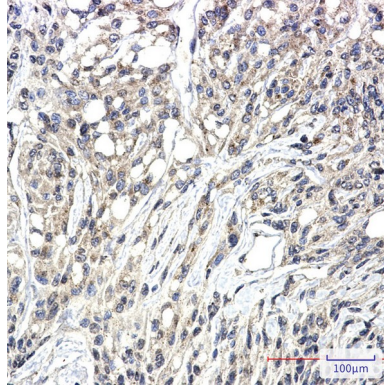


Western blot analysis of Phospho-PKC zeta (Thr410)/PKC lambda (Thr412) in mouse brain lysates using Phospho-PKC zeta/lambda (Thr410/Thr412) antibody.



Western blot analysis of PKC zeta (Phospho-Thr410)/PKC lambda (Phospho-Thr412) in HeLa, A549, HL-60 lysates using PKC zeta (Phospho-Thr410)/PKC lambda (Phospho-Thr412) antibody.

**Product Name: Phospho-PKC zeta/lambda
(Thr410/Thr412) Rabbit Monoclonal Antibody
Catalog #: AMRe02866**



Immunohistochemistry analysis of paraffin-embedded Human Brain using PKC zeta (Phospho-Thr410)/PKC lambda (Phospho-Thr412) antibody. High-pressure and temperature Sodium Citrate pH 6.0 was used for antigen retrieval.

Note

For research use only.