

**Product Name: Phospho-PKC delta (Ser299) Rabbit
Monoclonal Antibody
Catalog #: AMRe02865**



Summary

Production Name	Phospho-PKC delta (Ser299) Rabbit Monoclonal Antibody
Description	Recombinant Rabbit Monoclonal antibody
Host	Rabbit
Application	WB,IHC-P,IP
Reactivity	Human

Performance

Conjugation	Unconjugated
Modification	Phosphorylated
Isotype	IgG
Clonality	Monoclonal Antibody
Form	Liquid
Storage	Store at 4°C short term. Aliquot and store at -20°C long term. Avoid freeze/thaw cycles.
Buffer	50mM Tris-Glycine(pH 7.4), 0.15M NaCl, 40% Glycerol, 0.01% Sodium azide and 0.05% BSA
Purification	Affinity Purified

Immunogen

Gene Name	PRKCD
Alternative Names	Protein kinase C delta type; Tyrosine-protein kinase PRKCD; nPKC-delta
Gene ID	5580
SwissProt ID	Q05655

Application

Dilution Ratio	WB: 1/500-1/1000 IHC: 1/50-1/100 IP: 1/20
Molecular Weight	Calculated MW: 78 kDa; Observed MW: 78 kDa

**Product Name: Phospho-PKC delta (Ser299) Rabbit
Monoclonal Antibody
Catalog #: AMRe02865**

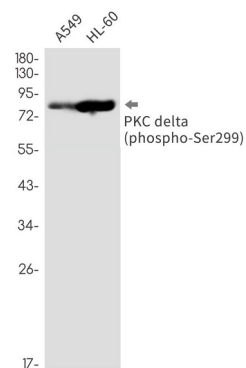
Background

Protein kinase C (PKC) is a family of serine- and threonine-specific protein kinases that can be activated by calcium and the second messenger diacylglycerol. PKC family members phosphorylate a wide variety of protein targets and are known to be involved in diverse cellular signaling pathways.

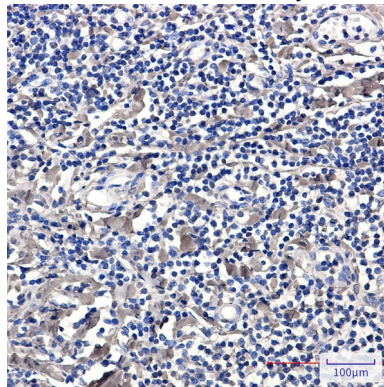
Research Area

Signal Transduction

Image Data



Western blot analysis of Phospho-PKC delta (Ser299) in A549, HL-60 lysates using Phospho-PKC delta (Ser299) antibody.



Immunohistochemistry analysis of paraffin-embedded Human tonsil using PKC delta (Phospho-Ser299) antibody. High-pressure and temperature Sodium Citrate pH 6.0 was used for antigen retrieval.

Note

For research use only.